



# TRUMAN CONNECTED

*Planning & Designing with You*



# CITY COUNCIL STUDY SESSION

July 27, 2020



INDEPENDENCE  
★ MISSOURI ★ SM



# PLANNING SUSTAINABLE PLACES GRANT



- ✓ Support the development and implementation of **local activity center plans**
- ✓ Support **localized public engagement** and community consensus building.
- ✓ Support the identification and conceptualization of land use strategies, transportation projects, and related sustainable development initiatives
- ✓ Support the **Creating Sustainable Places** plan

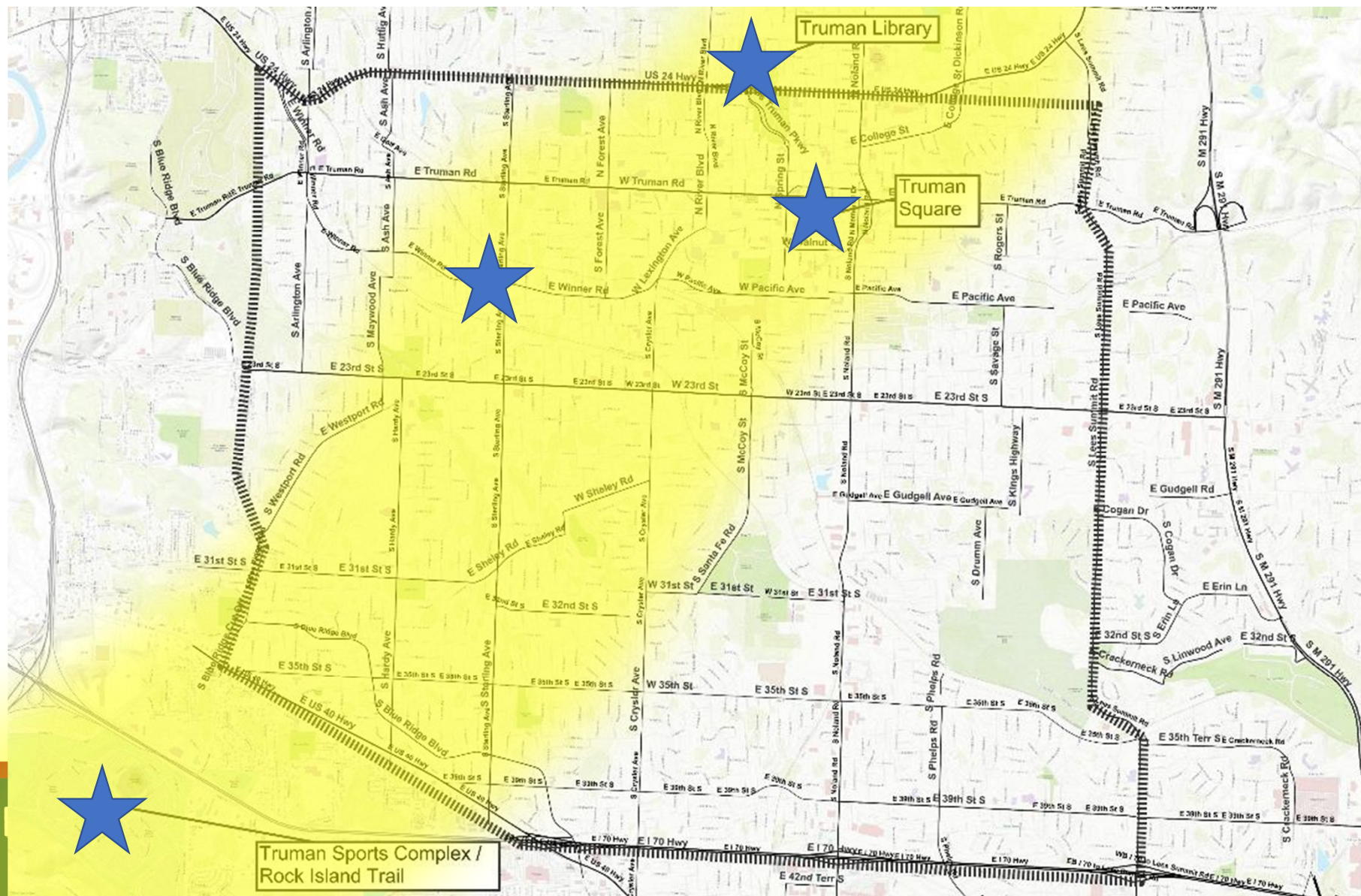


# TRUMAN CONNECTED INITIAL PRIORITIES

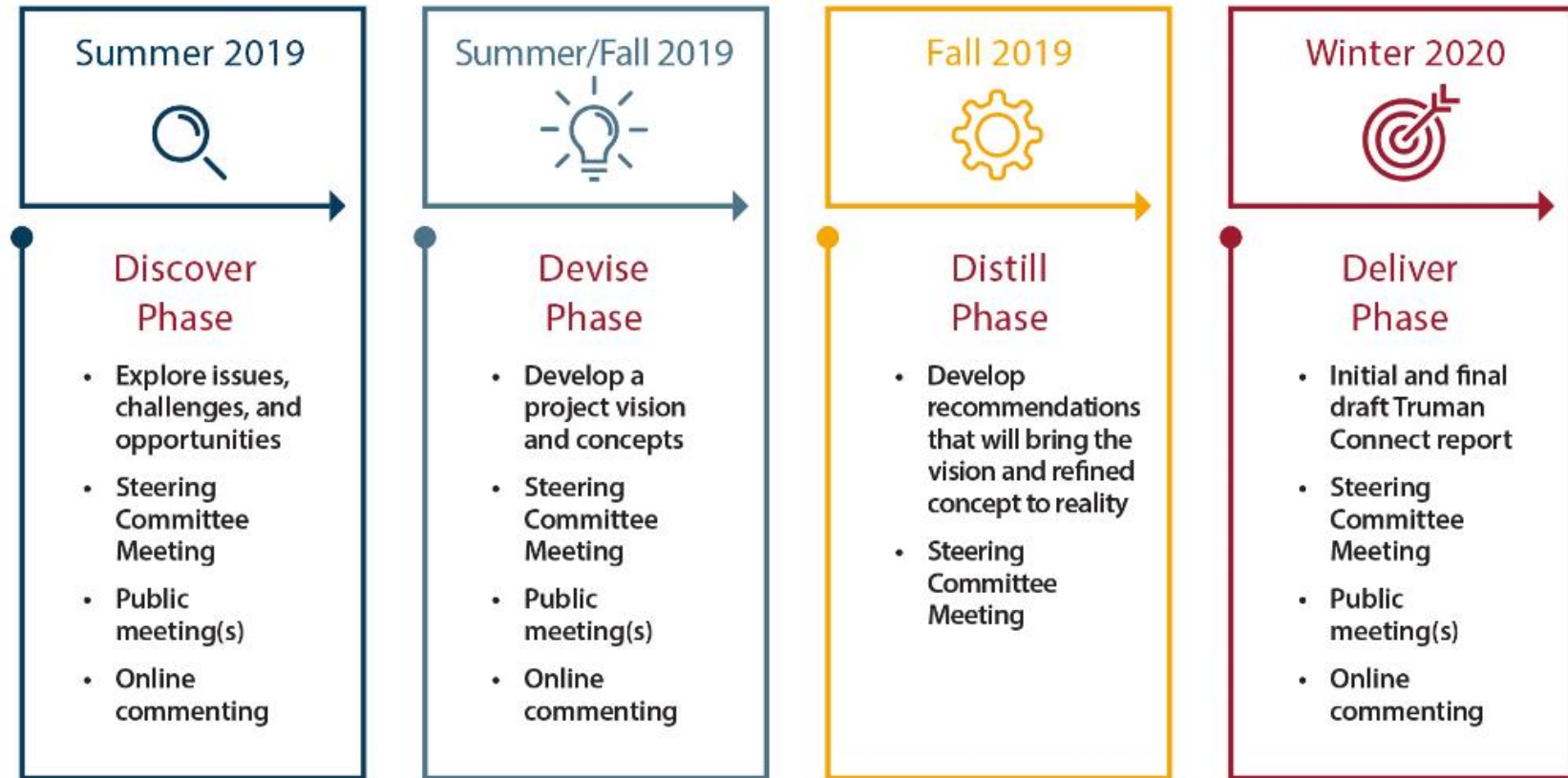
- ✓ Provide safe, convenient, and comfortable **transportation options** to residents without access to vehicles
- ✓ Integrate the Truman Connect into existing City plans and **National Historic Trail Retracement Plan**.
- ✓ Identify a **single, optimal route** from the Truman Presidential Library to the Rock Island Trailhead via Square & Englewood
- ✓ Identify the **type of transportation facilities** to be implemented throughout the proposed route
- ✓ Perform a **robust engagement** activity including citizens, business owners and stakeholders, to achieve the priorities above.







# PROCESS & SCHEDULE





# STEERING COMMITTEE

1. Andrew Phillips (Mid-Continent Public Library)
2. Becky Miles (Citizen)
3. Dr. Lance Stout (Independence Public Schools)
4. Daryl Huddleston (Independence Public Schools)
5. Dr. Cindy Grant (Independence Public Schools)
6. Dr. Dale Herl (Independence School District)
7. John Perkins (City Council)
8. Kirsten Conley (Square Association)
9. Ann Hinojosa (Englewood Business Association)
10. Mark Pace (Pace Bicycle Haven)
11. Kurt Graham (Truman Library & Museum)
12. Tiffany Mautino (Mid-Continent Public Library)
13. Rick Frazier (Peddlers Cycling & Fitness)



# PUBLIC ENGAGEMENT

- ✓ **400 people** engaged in person
- ✓ **450 online** surveys completed
- ✓ 3 Pop-up Meetings
- ✓ 1 Public Open House
- ✓ 2 Online Surveys





# ONLINE SURVEY: USERS

- ✓87% of people **travel by car today**
- ✓78% would like to travel by **bike/walk more**



# ONLINE SURVEY: FACILITY TYPE



INDEPENDENCE  
★ MISSOURI ★ SM



# EXISTING PLAN REVIEW

- ✓ Imagine Independence: Comprehensive Plan 2040
- ✓ City of Independence Strategic Plan: Independence for All
- ✓ National Historic Trail Retracement Plan
- ✓ Downtown Streetscape Action Plan
- ✓ Highway 40 Corridor Study and Focus Area Plan
- ✓ Highway 24 Corridor Study Plan
- ✓ Englewood Station Arts Circulation Plan
- ✓ Square Revitalization Plan
- ✓ Englewood Streetscape Projects
- ✓ Truman Road Streetscape Projects
- ✓ 40 Highway Complete Streets Project
- ✓ 24 Highway Complete Streets Project
- ✓ Sterling Complete Streets Traffic Study
- ✓ Noland Road Complete Street Reconstruction
- ✓ Preservation Master Plan
- ✓ Communities for All Ages
- ✓ Downtown Redevelopment Coordinating Committee Report



INDEPENDENCE  
★ MISSOURI ★ SM



# TRUMAN CONNECTED VISION

The **Truman Connected** facility will be a **safe, inclusive, and aesthetically pleasing space** for **walking and biking** that **connects the people of Independence to each other and to the City's rich history.**



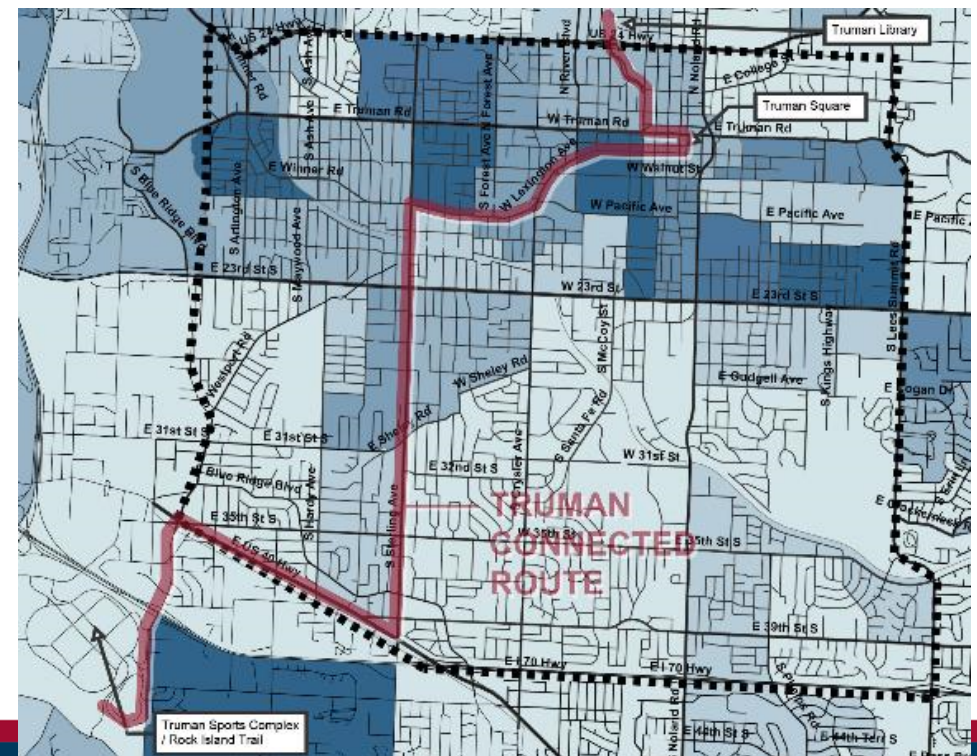
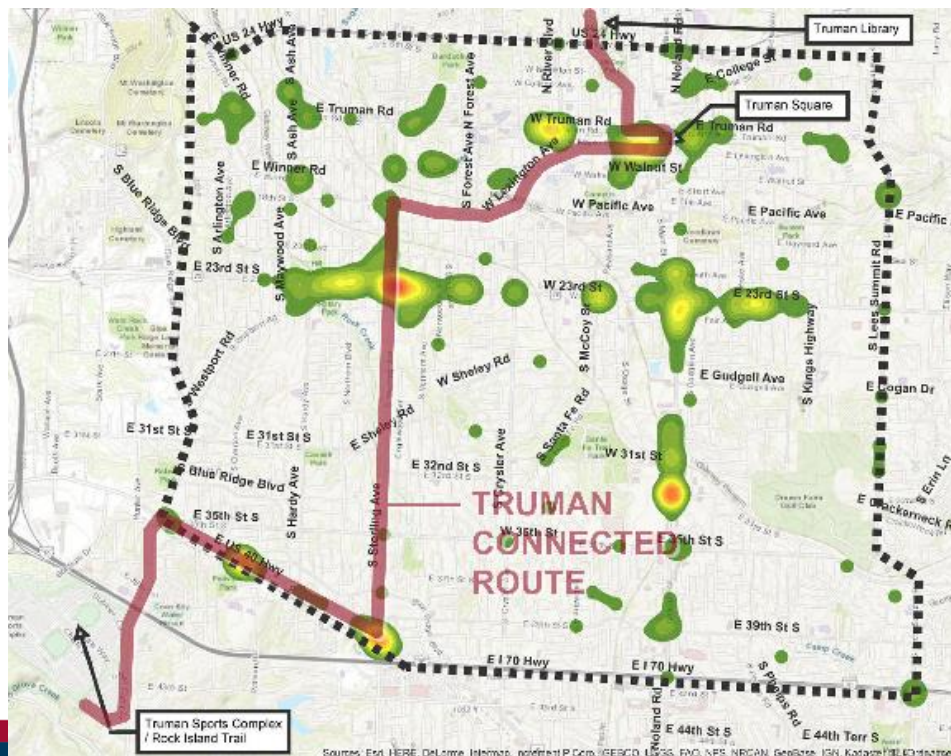


# TRUMAN CONNECTED GOALS

- ✓ Connect casual pedestrians and cyclists to schools, places of work, and shopping and dining destinations
- ✓ Provide a space for residents to lead healthier lifestyles through active transportation
- ✓ Support existing and new businesses by connecting residents and visitors to them in a fun and attractive way
- ✓ Offer an interactive connection to Independence's rich history
- ✓ Increase community pride by being aesthetically pleasing and well-maintained.



# FACILITY SELECTION DATA DRIVEN APPROACH



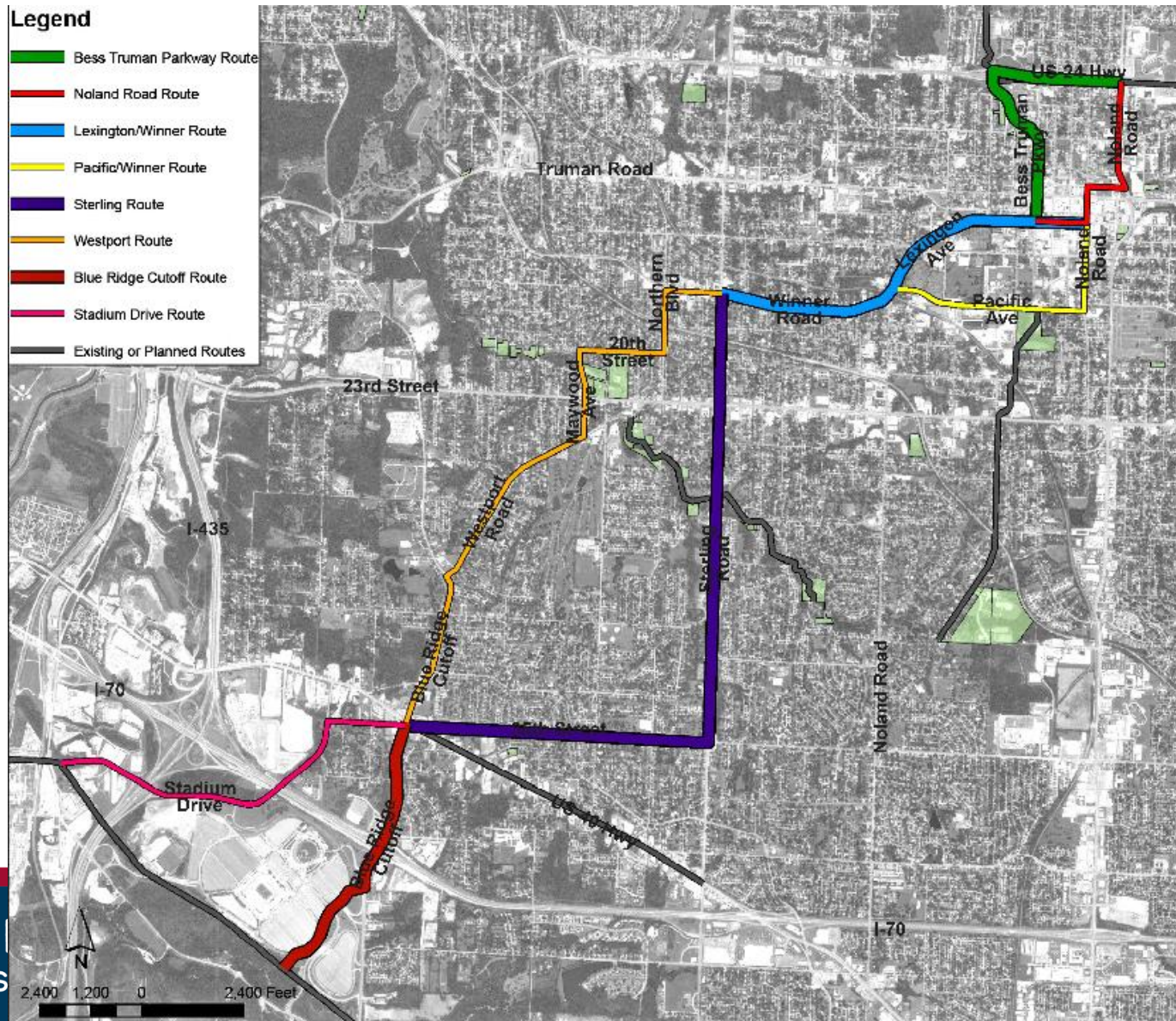
INDEPENDENCE  
★ MISSOURI ★ SM





# Legend

- Bess Truman Parkway Route
- Noland Road Route
- Lexington/Winner Route
- Pacific/Winner Route
- Sterling Route
- Westport Route
- Blue Ridge Cutoff Route
- Stadium Drive Route
- Existing or Planned Routes

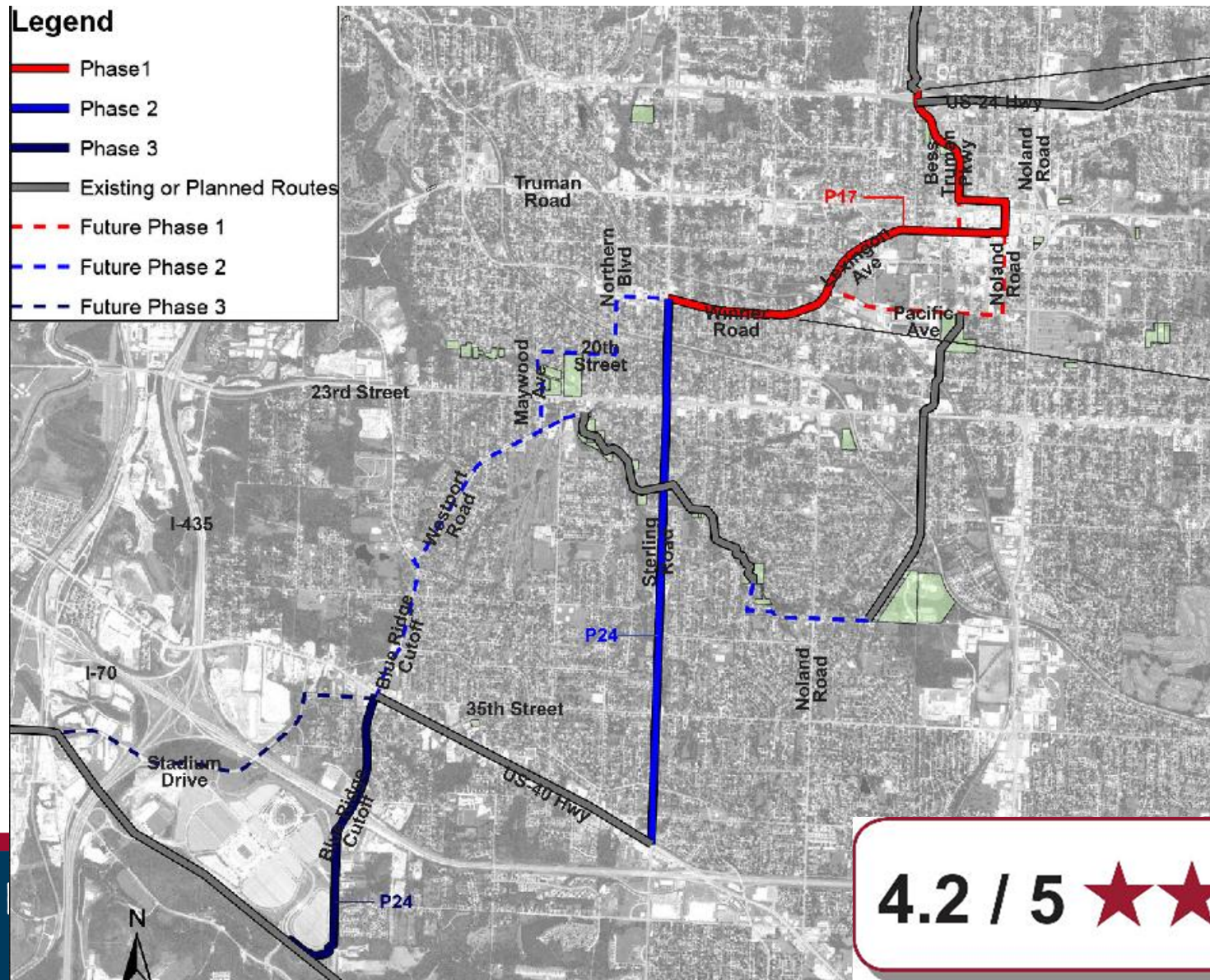


Scoring Criteria	Combined Score	Performance Score	Connectivity				Recreation				Economic Development		Historic Connection		Implementation Score	Implementation Feasibility			
			Proximity to Schools	Proximity to Shopping/Dining Destinations	Proximity to areas of higher job/population density	Provides short, direct connection between districts	Situated on quiet streets	Proximity to parkland	Connections to existing /planned recreational trails	Relative flatness of route	Proximity to existing business & business districts	Proximity to development opportunities	Proximity to Historic Sites	Proximity to Historic Trails Routes (SantaCaliGon)		Relative Cost	Right of Way Impact	Impact to vehicle travel	Railroad crossings
Square North																			
Bess Truman Parkway Route (GREEN ALIGNMENT)	52	54	4	5	5	5	5	5	5	3	5	2	5	5	-2	-2	0	0	0
Noland Road Route (RED ALIGNMENT)	26	37	3	5	5	3	1	1	2	2	5	5	2	3	-11	-5	-5	-1	0
Square South																			
Lexington/Winner Route (TEAL ALIGNMENT)	38	42	3	5	4	5	3	2	1	5	4	4	4	2	-4	-3	0	-1	0
Pacifico/Winner Route (YELLOW ALIGNMENT)	30	42	3	3	4	3	4	2	2	3	4	4	5	5	-12	-4	-2	-1	-5
Central City																			
Sterling Route (PURPLE ALIGNMENT)	28	34	3	4	4	3	2	2	5	1	3	4	1	2	-6	-3	0	-3	0
Westport Route (ORANGE ALIGNMENT)	20	31	3	2	2	4	5	5	2	3	2	1	1	1	-11	-4	-2	-1	-4
Rock Island Connector																			
Blue Ridge Cutoff Route (BROWN ALIGNMENT)	17	23	1	2	2	5	1	1	5	2	3	1	0	0	-6	-4	-2	0	0
Stadium Drive Route (PINK ALIGNMENT)	14	21	1	1	1	4	3	1	5	3	1	1	0	0	-7	-5	-2	0	0



## Legend

- Phase 1
- Phase 2
- Phase 3
- Existing or Planned Routes
- Future Phase 1
- Future Phase 2
- Future Phase 3

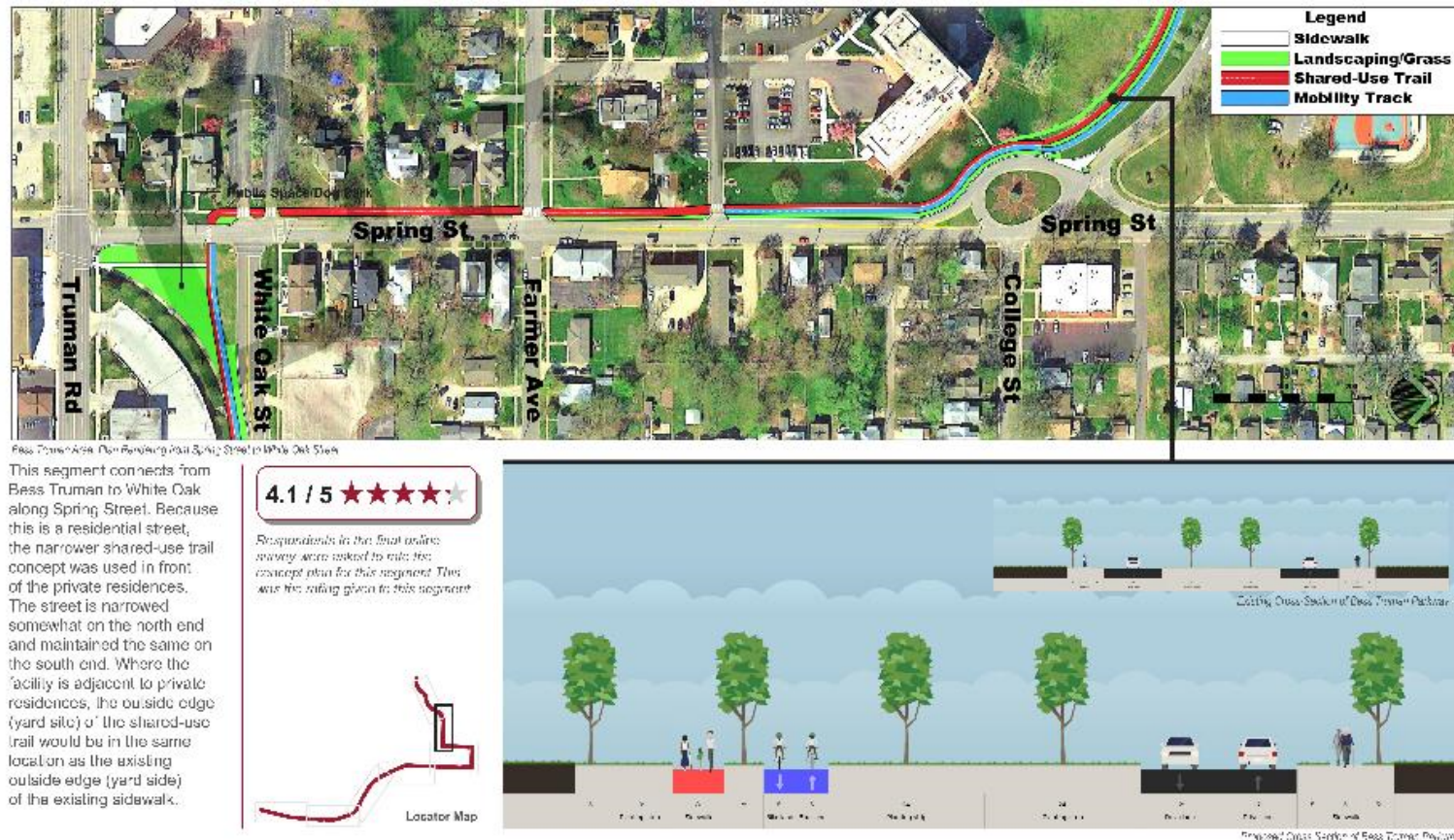


INDE  
★ M

4.2 / 5 ★★★★★



# DETAILED CONCEPT DESIGN CREATED







### JACK & MARTHA

JACK & MARTHA ENJOY LEARNING ABOUT **HISTORY** FROM THE INTERPRETIVE SIGNAGE ON THEIR WAY TO THE TRUMAN LIBRARY



### RYAN

RYAN WORKS 2 MILES AWAY FROM HOME. THE **CYCLE TRACK** GIVES HIM THE FREEDOM TO BIKE TO WORK



### MICHELLE

NEW MOM MICHELLE ENJOYS TAKING THE **WALKING TRAIL** HOME FROM MCCOY PARK



### ANTHONY & ADAM

ANTHONY & ADAM ARE TAKING THEIR TIME IN THE **SHADE** ON THEIR WEEKLY WALK UP TO THE GROCERY STORE







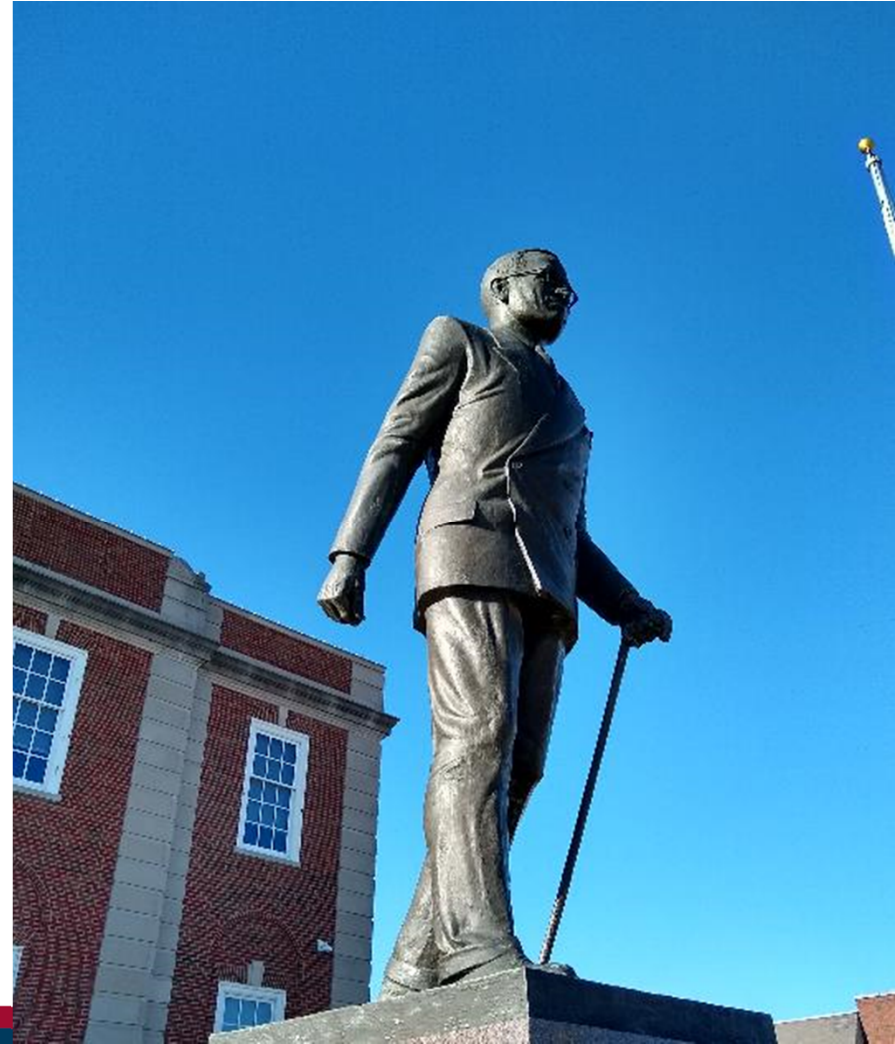
# PROJECT COST

Project Phase	Estimated Total Cost	Estimated Construction Cost	Estimated Design Cost	Anticipated Construction Year
Square Streetscape	\$ 3,000,000.00 <sup>1</sup>	\$ 2,620,000.00	\$ 380,000.00	TBD
Truman Connected Phase 1	\$ 3,860,000.00	\$ 3,450,000.00	\$ 410,000.00	2022
Truman Connected Phase 2	\$ 6,930,000.00	\$ 6,190,000.00	\$ 740,000.00	TBD
Truman Connected Phase 3	\$ 1,870,000.00	\$ 1,670,000.00	\$ 200,000.00	TBD
<b>Total</b>	<b>\$ 15,660,000.00</b>	<b>\$ 13,930,000.00</b>	<b>\$ 1,730,000.00</b>	

1. Total \$500,000.00 Transportation Alternates Program (TAP) fund from Truman Connected Phase 1 will go toward this project.



# QUESTIONS?



INDEPENDENCE  
★ MISSOURI ★ SM

