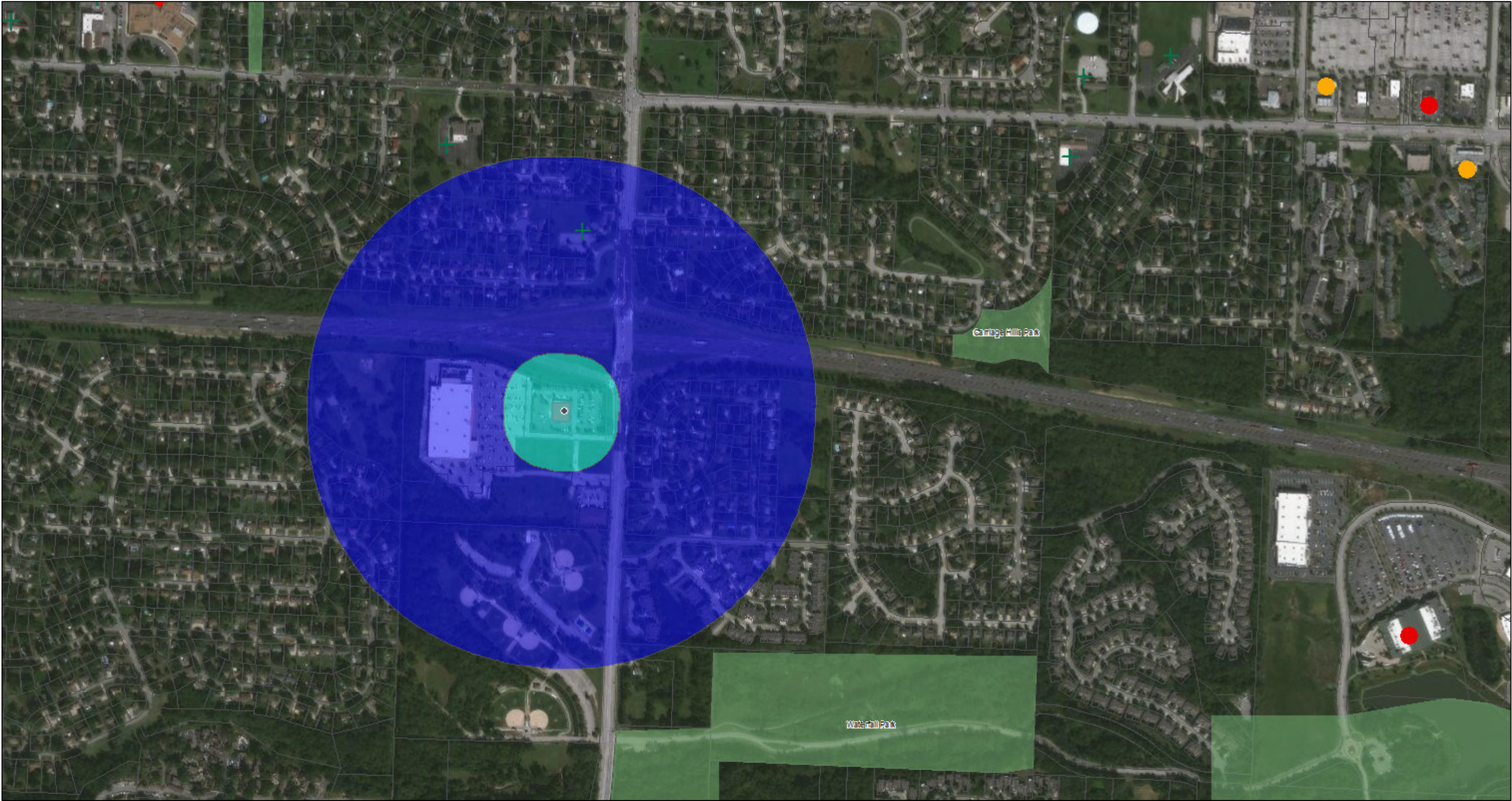


Liquor Licensing\_4110 S. Lee's Summit Rd.



10/15/2020, 8:26:00 AM

**Churches**  
+ Church

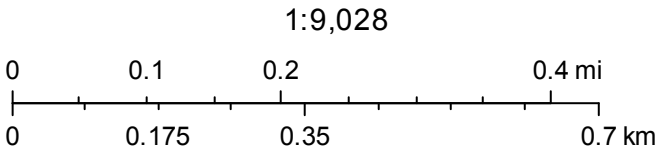
**Areas**  
Override 1

**Schools**  
Elementary

**Buffer of Areas**  
300  
1500

**Active Liquor Licenses**  
Drink  
Package Liquor  
Parks

**Parcels**



Source: Esri, Maxar, GeoEye, Earthstar Geographics, CNES/Airbus DS, USDA, USGS, AeroGRID, IGN, and the GIS User Community