

August 11, 2021 COVID-19 Report

Cumulative Confirmed Cases by Independence Zip Code						
Independence Zip Code	Total Reported Cases as of July 14th	Rate per 1,000 as of July 14th	Number of New Cases Since July 14th	Percent Increase in the Number of Cases	Total Estimated Cases to date	Rate per 1,000 residents to date
64050	2286	102.50	147	6.43%	2433	109.09
64052	2231	111.01	129	5.78%	2360	117.42
64053	557	103.07	34	6.10%	591	109.36
64054	301	98.53	19	6.31%	320	88.96
64055	3605	106.17	212	5.88%	3817	112.42
64056	1814	105.87	148	8.16%	1962	114.51
64057	1857	127.45	149	8.02%	2006	136.59
64058	782	114.14	0***	--	782	114.14
64015	3329	108.25	0***	--	3329	108.25
64016	440	93.22	0***	--	440	93.22
Total	17202	107.41	838	4.87%	18040	112.64

***On July 15, 2021, the City took over communicable disease reporting from the County. Since that date, only cases for Independence citizens within 64058, 64015, and 64016 are included in new data. As historical data is analyzed, these rows will be updated to include only Independence residents.

To date, the City of Independence has seen **149** confirmed cases among staff: forty-four in the Fire Department, fifty-two in the Police Department, twenty-one in the Utilities Department, twelve in Municipal Services, two in Animal Services, two in Municipal Court, three in Finance & Administration, three in Community Development, one in the City Manager's Office, and ten in the Parks/Recreation/Tourism Department.

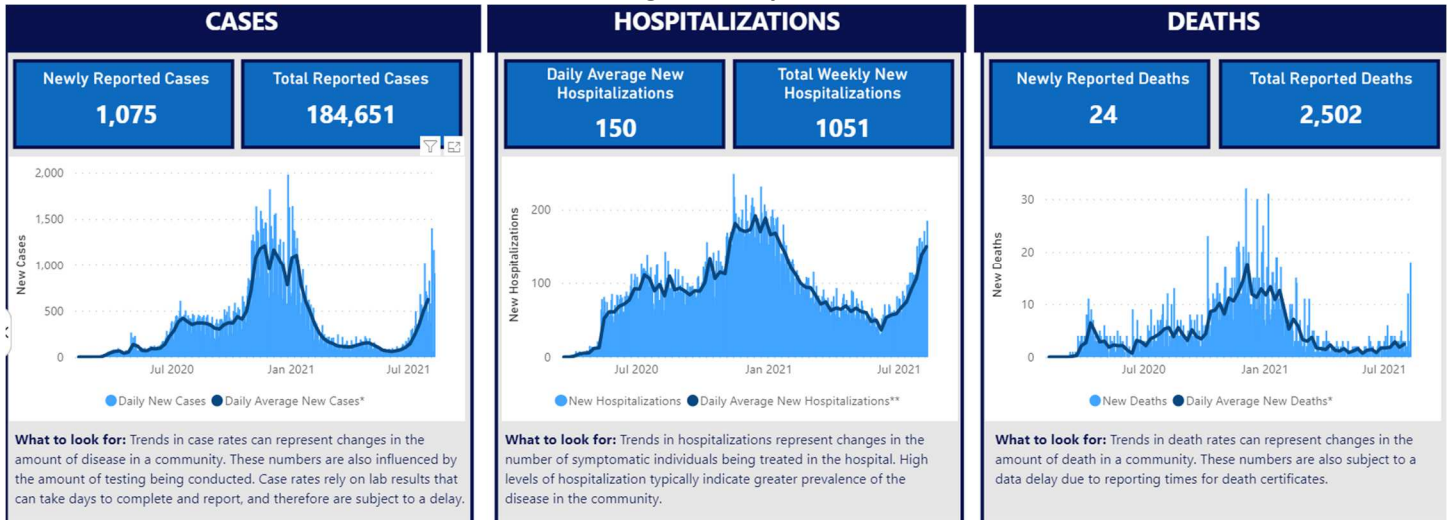
Please note: Positive rates should be at or below 5 percent for at least 14 days before a state or country can safely reopen, according to the World Health Organization. The Harvard Global Health group estimates that communities need to test widely enough so that the number of people testing positive for the virus is 3% or lower in order adequately suppress the pandemic. In the US, the current positive rate is **11.1%**.

Eastern Jackson County Comparison to Independence		
	Eastern Jackson County	Independence
14-Day Average Percent Positive	16.53%	18.86%
Cases Per 100,000	12,090	11,264
Deaths in the Last 7 Days	1	3

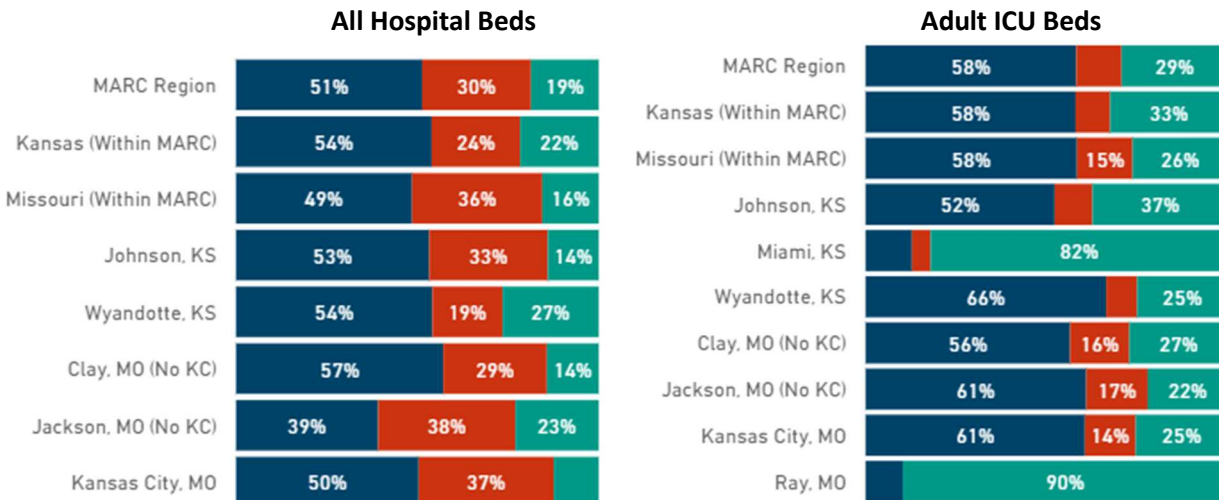
MARC Eastern Jackson County Hospital Stats			
	As of July 28	As of August 11	Percent Change
Total Beds Available	191	161	15.71% (decrease)
Used by Non-Covid Patients	427	442	3.51% (increase)
Used by Covid Patients	93	123	32.26% (increase)

**"Beds available" is now calculated based on beds that are staffed.

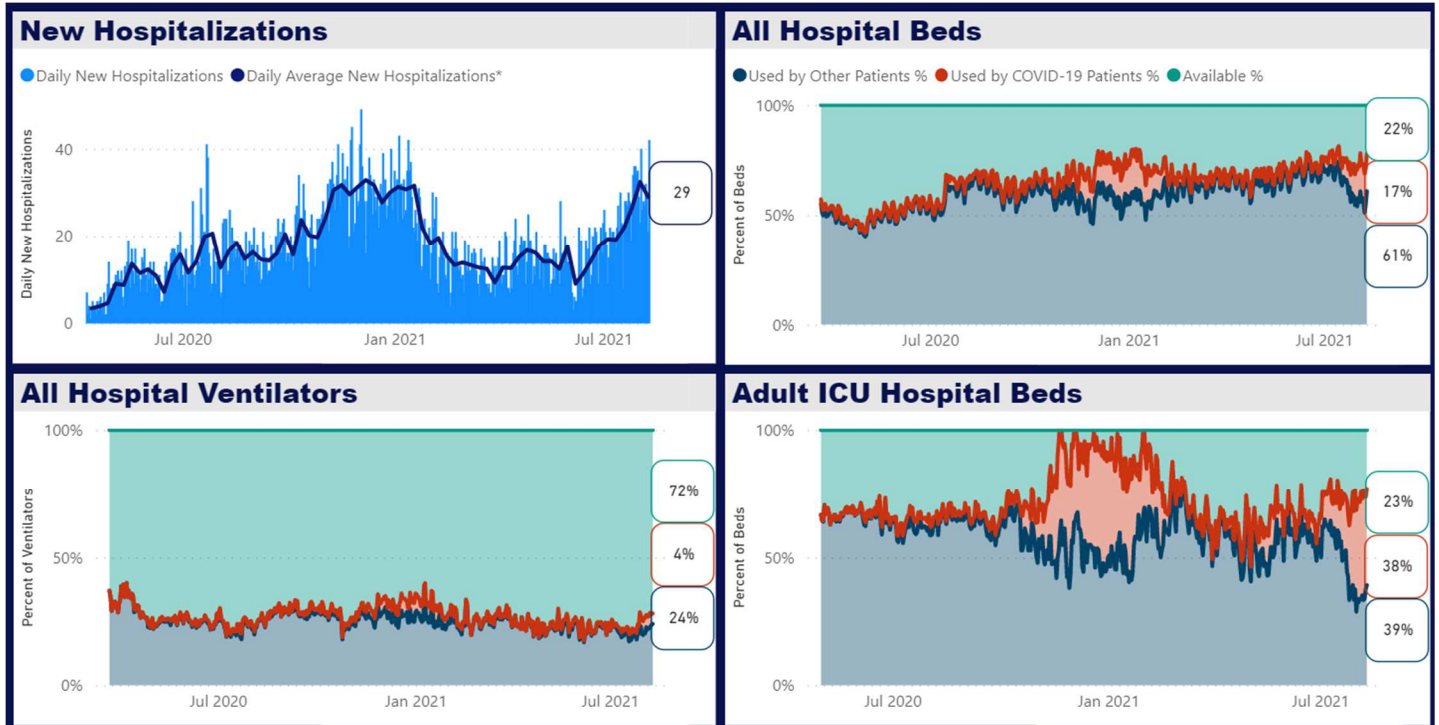
MARC Region Graphical Data Regional Snapshot



Jurisdiction Comparison on Hospital Resource Usage



Eastern Jackson County Hospital Resources Snapshot: Jan 1, 2020 – August 11, 2021



Institute of Health Metrics and Evaluation Hospital Resource Use Projections for Missouri

