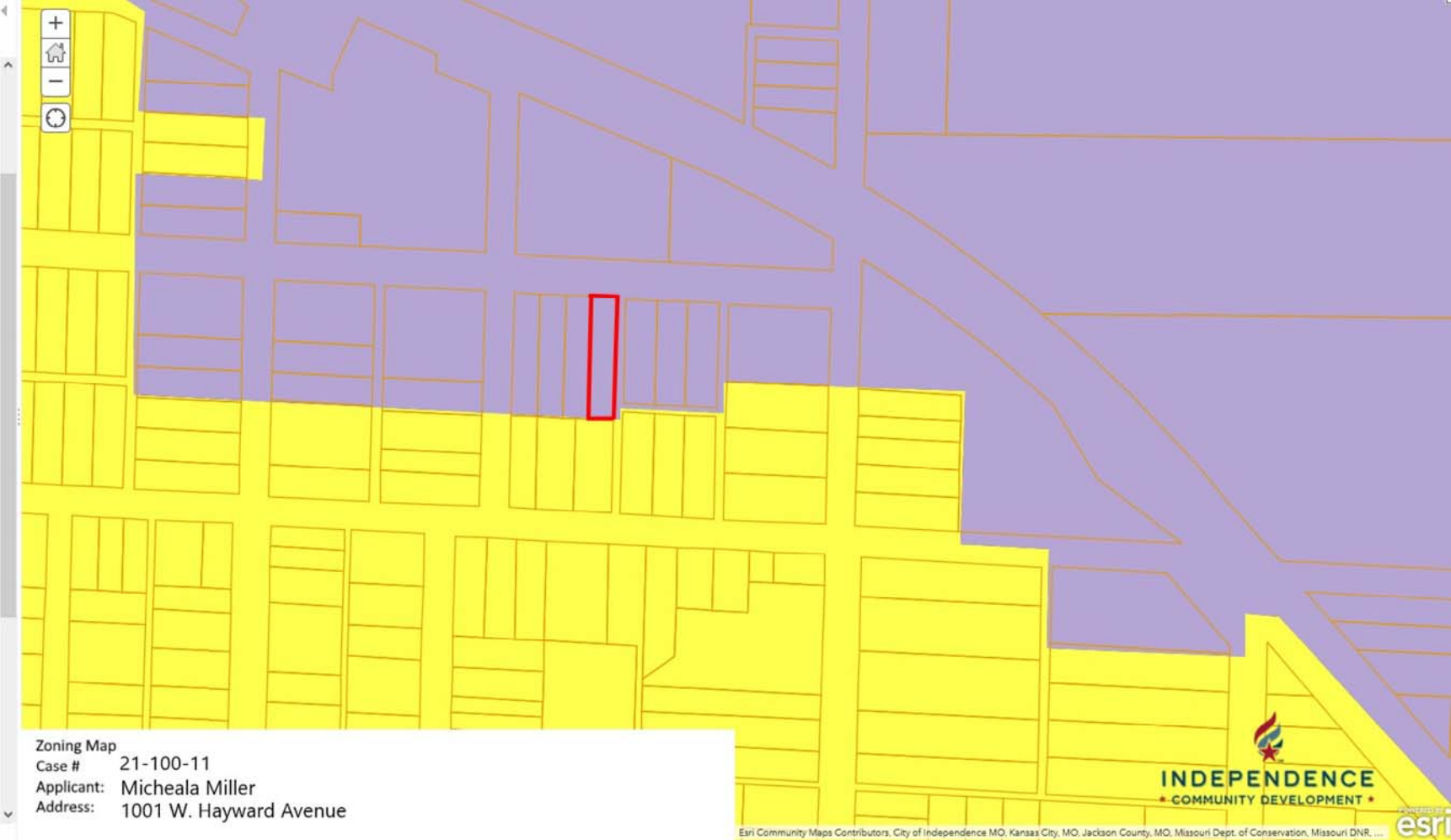


- Legend**
Zoning
- ARTS
 - Business Park
 - Business Park/PUD
 - Light Commercial
 - Commercial
 - Commercial/Historic Landmark
 - Commercial/PUD
 - Commercial/Special Character
 - Warehousing
 - Drumm Farm District
 - Industrial
 - Industrial/Jistoric Landmark
 - Industrial Park
 - Office
 - Office/Planned Unit Development
 - Single Family Residential Estate
 - Two Family Residential
 - Two Family Residential Historic Landmark
 - Two Family Residential/PUD
 - Moderate Density Residential/PUD
 - Single Family Residential Large Lot
 - Single Family Res Large Lot/PUD
 - High Density Residential/PUD
 - Single Family Residential Low Density
 - Single Family Residential Low Density/PUD
 - Single Family Residential



Zoning Map
Case # 21-100-11
Applicant: Micheala Miller
Address: 1001 W. Hayward Avenue

