

REVISION	BY

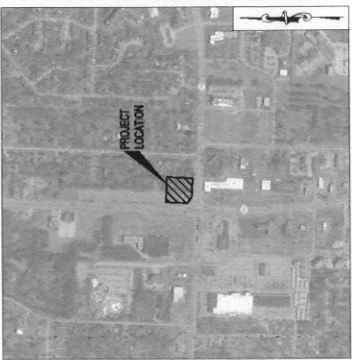
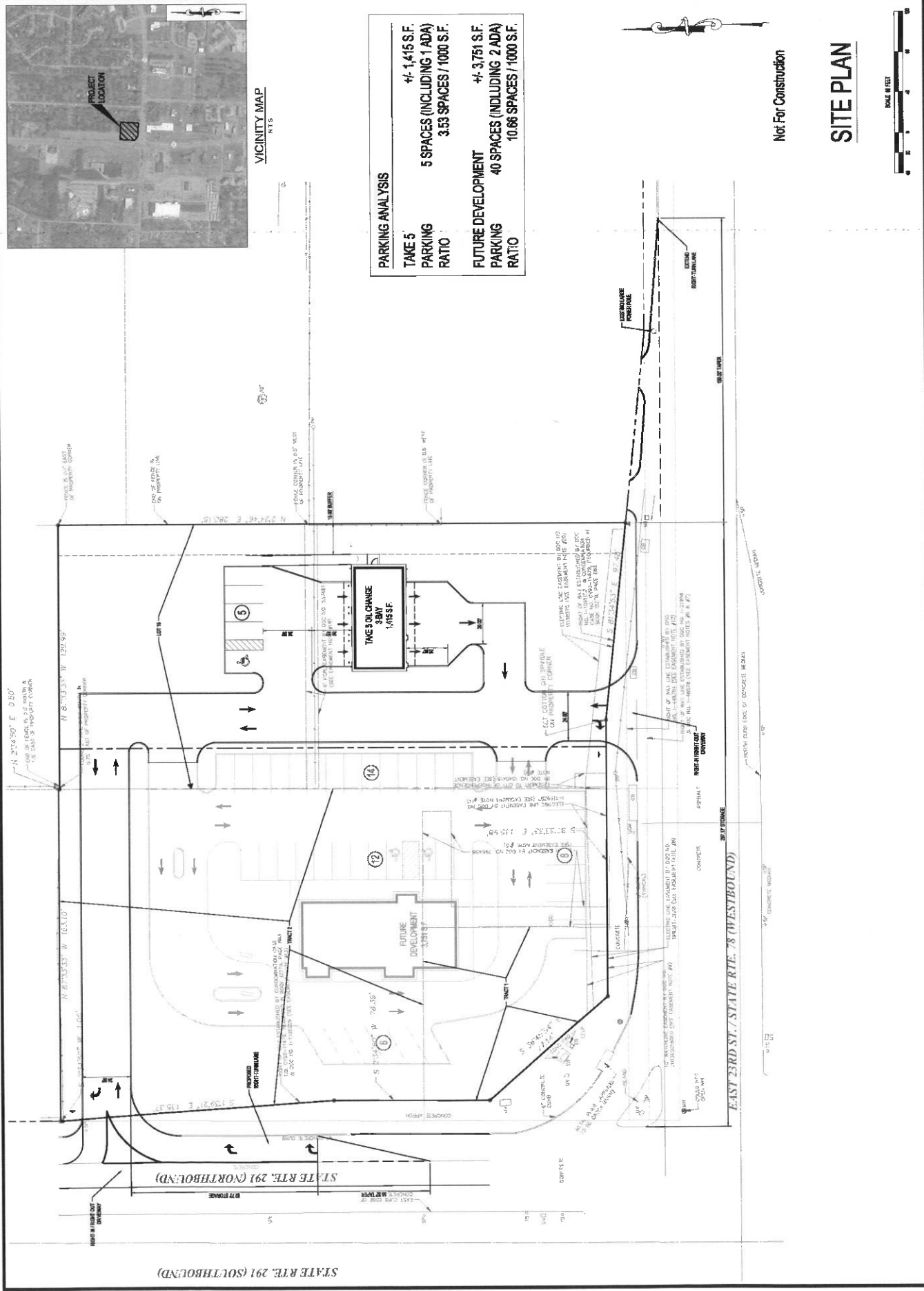
HIGH TIDE CONSULTANTS LLC
 700 CANAL BOULEVARD
 THIBODAUX, LA 70301
 www.hightide.com



DATE: _____
 SIGNATURE: _____
 STAMP: _____

DRIVEN ASSETS, LLC
 E 23RD STREET @ STATE ROAD 291
 INDEPENDENCE, MISSOURI
 PROPOSED TAKE 5 OIL CHANGE

DRAWN	
CHECKED	
DATE	
DESIGNED	
SCALE	
PROJECT NO.	
DATE	
SCALE	
DATE	
SHEET	C-1

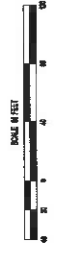


PARKING ANALYSIS

TAKE 5 PARKING RATIO	+/- 1,415 S.F. 5 SPACES (INCLUDING 1 ADA) 3.53 SPACES / 1000 S.F.
FUTURE DEVELOPMENT PARKING RATIO	+/- 3,751 S.F. 40 SPACES (INCLUDING 2 ADA) 10.66 SPACES / 1000 S.F.

Not For Construction

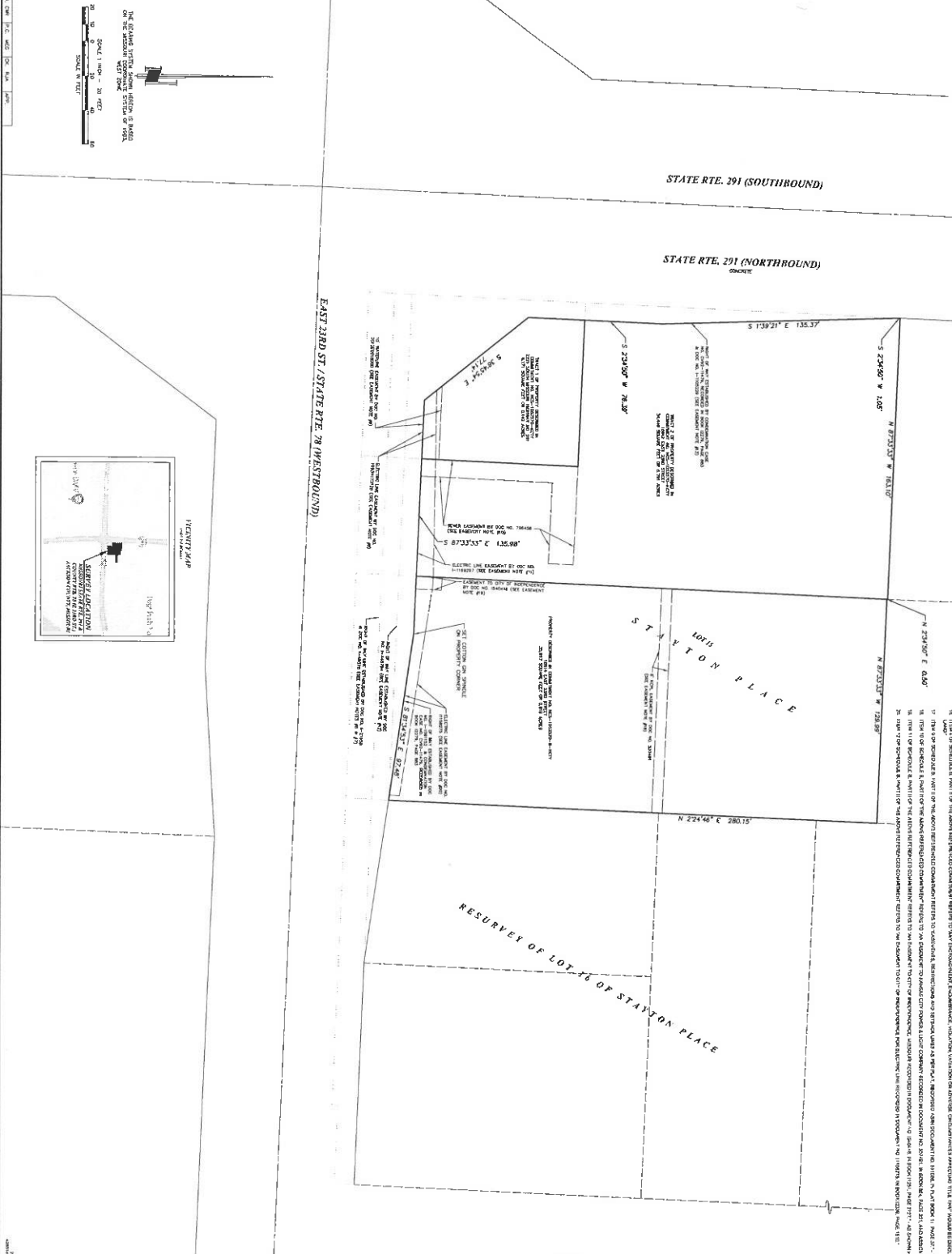
SITE PLAN



1. THE PROPERTY MAP, PART OF RECORD 71, SUBDIVISION AND ZONING MAP, APPROVED BY THE BOARD OF SUPERVISORS OF CALIFORNIA COUNTY, COUNTY OF SACRAMENTO, CALIFORNIA, IS HEREBY REFERRED TO AS "RECORD 71". THE PROPERTY MAP IS HEREBY REFERRED TO AS "RECORD 71".

2. THE PROPERTY MAP, PART OF RECORD 71, SUBDIVISION AND ZONING MAP, APPROVED BY THE BOARD OF SUPERVISORS OF CALIFORNIA COUNTY, COUNTY OF SACRAMENTO, CALIFORNIA, IS HEREBY REFERRED TO AS "RECORD 71". THE PROPERTY MAP IS HEREBY REFERRED TO AS "RECORD 71".

3. THE PROPERTY MAP, PART OF RECORD 71, SUBDIVISION AND ZONING MAP, APPROVED BY THE BOARD OF SUPERVISORS OF CALIFORNIA COUNTY, COUNTY OF SACRAMENTO, CALIFORNIA, IS HEREBY REFERRED TO AS "RECORD 71". THE PROPERTY MAP IS HEREBY REFERRED TO AS "RECORD 71".



LOT/EASEMENT DETAIL	
DATE: 08/20/2019	PROJECT: 19/0000000
FIRM: DIVINE ASS'NS, LLC	12750 15TH AVENUE
ATTN: MARK HOSPINE	SACRAMENTO, CA 95833
	JACKSON COUNTY
	RECORD 71
	12750 15TH AVENUE
	SACRAMENTO, CA 95833
	JACKSON COUNTY
	RECORD 71
	12750 15TH AVENUE
	SACRAMENTO, CA 95833
	JACKSON COUNTY
	RECORD 71

ANDERSON SURVEY COMPANY
 12750 15TH AVENUE
 SACRAMENTO, CA 95833
 (916) 486-2000