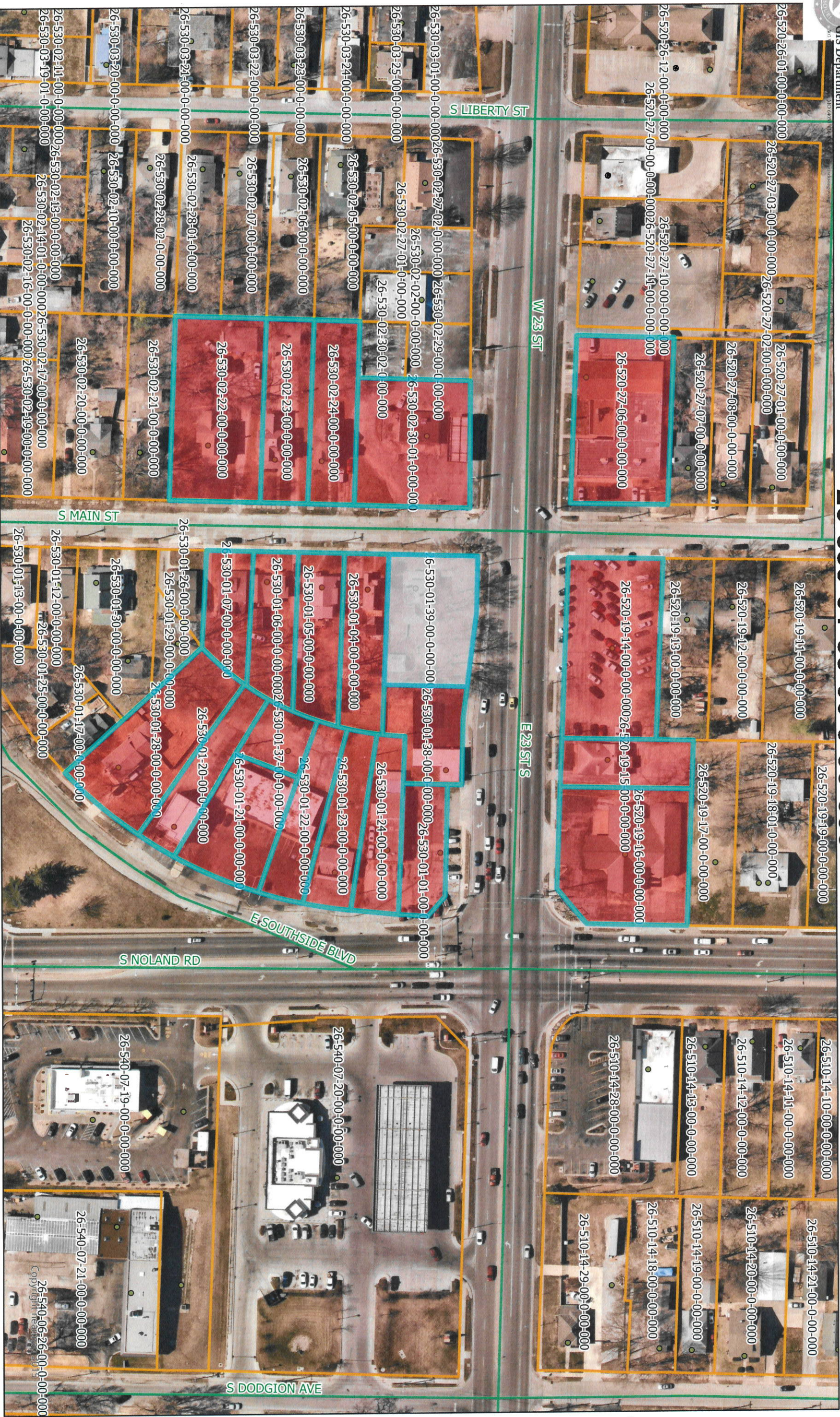
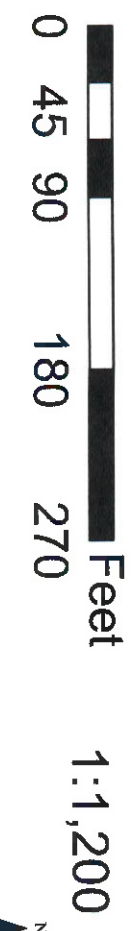


26-530-01-39-00-0-00-000



Legend
 Tax Parcels
 Streets



Date: 9/2/2021

DISCLAIMER: THESE MAPS ARE NOT SURVEY ACCURATE.
 JACKSON COUNTY GIS DEPARTMENT. Requester shall and hereby does hereby accept the data and information "as is" and the County, expressly disclaims any representation or warranty as to the completeness or accuracy of the data or information. Further, the County expressly disclaims any representation or warranty as to the suitability of the data or information for any specific use intended by the requestor. The Jackson County GIS Department maintains data for various purposes. Maps are intended to show, as accurately as possible, the relationship of data, but are not survey accurate. They reflect the status of the data at the time of printing.
 RELEASE: Requester expressly releases and agrees to hold the County, its officials, and its employees, harmless from any and all claims or damages, arising out of the use of the data or information, the accuracy of the data or information, or any reliance on the data or information. Requester expressly agrees to assume all risks for use and reliance on the data and information. Please contact (816) 881-4561 for further information.
 Copyright: Missouri State GIS

name	primary_situs_addr	owner	address_compl
26-530-02-30-01-0-00-000	101 W 23RD ST SINDEPENDENCE, MO 64055	AKD LLC	101 W 23RD STINDEPENDENCE, MO 64052
26-530-01-06-00-0-00-000	1217 S MAIN STINDEPENDENCE, MO 64055	INDEPENDENCE FAMILY RENTALS LLC	30002 38TH STGRAIN VALLEY, MO 64029
26-530-01-20-00-0-00-000	1218 S NOLAND RDINDEPENDENCE, MO 64055	NGUYEN BINH XUAN	413 SW WEBSTER DRBLUE SPRINGS, MO 64014
26-530-01-02-00-0-00-000	0	FRYER BRANDON J	117 W 23RD STINDEPENDENCE, MO 64050
26-520-19-14-00-0-00-000	100 E 23RD ST SINDEPENDENCE, MO 64050	MCCCLAIN KEN	221 W LEXINGTONINDEPENDENCE, MO 64050
26-530-01-28-00-0-00-000	124 E SOUTHSIDE BLVDINDEPENDENCE, MO 64055	MURPHY PATRICIA	124 E SOUTHSIDE BLVDINDEPENDENCE, MO 64055
26-530-01-04-00-0-00-000	1211 S MAIN STINDEPENDENCE, MO 64055	MEALS ELBERT S	1211 S MAININDEPENDENCE, MO 64055
26-520-19-15-00-0-00-000	110 E 23RD ST SINDEPENDENCE, MO 64050	23 NOLAND LLC	3513 SADDLE RIDGE DRINDEPENDENCE, MO 64057
26-530-02-22-00-0-00-000	1224 S MAIN STINDEPENDENCE, MO 64055	HURLA SARAH M & WILLIAMS MARIE M	1224 S MAININDEPENDENCE, MO 64055
26-530-01-05-00-0-00-000	1215 S MAIN STINDEPENDENCE, MO 64055	MOTLEY BRENDA M	1215 S MAIN STINDEPENDENCE, MO 64055
26-530-01-03-00-0-00-000	0	FRYER BRANDON J	117 W 23RD STINDEPENDENCE, MO 64050
26-530-01-24-00-0-00-000	1206 S NOLAND RDINDEPENDENCE, MO 64055	FERZANDI RUSTOM K & VERA R TRUSTEE	18730 W 98TH TERLENEXA, KS 66220
26-530-01-01-00-0-00-000	1200 S NOLAND RDINDEPENDENCE, MO 64055	FERZANDI RUSTOM K & VERA R TRUSTEE	18730 W 98TH TERLENEXA, KS 66220
26-530-01-07-00-0-00-000	1223 S MAIN STINDEPENDENCE, MO 64055	SIGARS AUTUMN	1223 S MAIN STINDEPENDENCE, MO 64055
26-530-02-23-00-0-00-000	1220 S MAIN STINDEPENDENCE, MO 64055	BERG JACK L	1220 MAININDEPENDENCE, MO 64055
26-530-02-24-00-0-00-000	1216 S MAIN STINDEPENDENCE, MO 64055	KASSENS FAMILY TRUST	27811 CONNIE WAYSUN CITY, CA 92586
26-530-01-37-00-0-00-000	1214 S NOLAND RDINDEPENDENCE, MO 64055	NGUYEN BINH XUAN	413 SW WEBSTER DRBLUE SPRINGS, MO 64014
26-530-01-23-00-0-00-000	1212 S NOLAND RDINDEPENDENCE, MO 64055	BALLARD BRANDON BEAU	814 S ASH AVEINDEPENDENCE, MO 64053
26-530-01-21-00-0-00-000	1214 S NOLAND RD APT AINDEPENDENCE, MO 64055	ANR HOLDINGS LLC	1201 LANDMARK AVE STE 3LIBERTY, MO 64068
26-520-19-16-00-0-00-000	1134 S NOLAND RDINDEPENDENCE, MO 64050	23 NOLAND LLC	3513 SADDLE RIDGE DRINDEPENDENCE, MO 64057
26-520-27-06-00-0-00-000	112 W 23RD ST SINDEPENDENCE, MO 64050	IMMANUEL BAPTIST CHURCH	112 W 23RD STINDEPENDENCE, MO 64055
26-530-01-22-00-0-00-000	1214 S NOLAND RDINDEPENDENCE, MO 64055	ANR HOLDINGS LLC	1201 LANDMARK AVE STE 3LIBERTY, MO 64068