

November 10, 2021 COVID-19 Report

October 28-November 10: Cumulative Confirmed Cases by Independence Zip Code**						
Independence Zip Code	Total Reported Cases as of Oct. 27	Rate per 1,000 as of Oct. 27	Number of New Cases Since Oct. 27	Percent Increase in the Number of Cases	Total Estimated Cases to date	Rate per 1,000 residents to date
64050	2933	131.51	57	1.94%	2990	134.07
64052	2927	145.64	49	1.67%	2976	148.07
64053	726	134.34	14	1.93%	740	136.94
64054	351	97.58	3	0.85%	354	98.42
64055	4637	136.57	83	1.79%	4720	139.01
64056	2418	141.12	38	1.57%	2456	143.34
64057	2339	159.27	31	1.33%	2370	161.38
64058	782	112.70	0	0.00%	782	112.70
64015	3329	106.05	0	0.00%	3329	106.05
64016	440	94.73	0	0.00%	440	94.73
Total	20882	130.39	275	1.32%	21157	132.11

**Data is preliminary due to a delay in laboratory reporting. Updates will be provided in subsequent reports.

***On July 15, 2021, the City took over communicable disease reporting from the County. Since that date, only cases for Independence citizens within 64058, 64015, and 64016 will be included in new data and delays are expected. As historical data is analyzed, these rows will be updated to include only Independence residents.

Case rate by Independence Zip Code: Week-to-Week Comparison			
Independence Zip Code	Cases per 1,000 residents October 27th to November 2nd	Cases per 1,000 residents November 3rd to November 9th	Change in rate
64050	1.12	1.03	-8%
64052	1.34	0.75	-44%
64053	1.85	0.56	-70%
64054	0.28	0.28	0%
64055	1.00	1.06	6%
64056	1.11	0.88	-21%
64057	0.68	1.29	90%

To date, the City of Independence has seen **170** confirmed cases among staff: forty-six in the Fire Department, sixty-four in the Police Department, twenty-three in the Utilities Department, thirteen in Municipal Services, six in Health & Animal Services, two in Municipal Court, three in Finance & Administration, three in Community Development, one in the City Manager's Office, and ten in the Parks/Recreation/Tourism Department.

Please note: Positive rates should be at or below 5% for at least 14 days before a state or country can safely reopen, according to the World Health Organization. The Harvard Global Health group estimates that communities need to test widely enough so that the number of people testing positive for the virus is 3% or lower in order adequately suppress the pandemic. In the US, the current positive rate is **5.0%**.

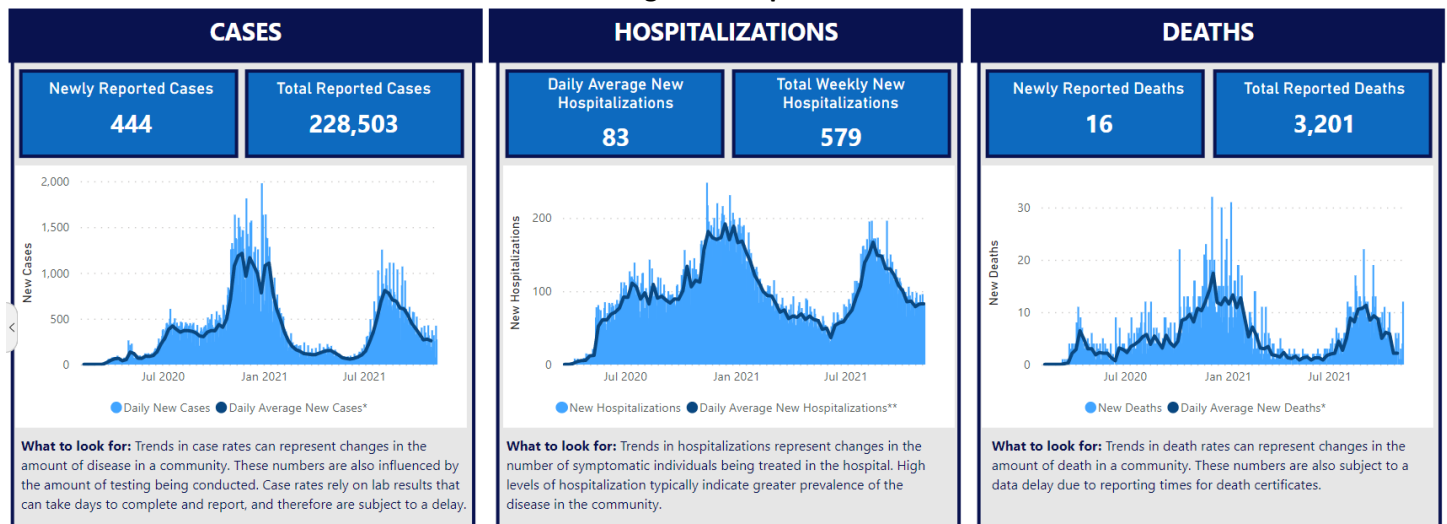
Eastern Jackson County Comparison to Independence		
	Eastern Jackson County	Independence
Rolling Average Percent Positive	7.95%	8.81%
Total Deaths	539	250
Deaths in the Last 7 Days	2	0

MARC Eastern Jackson County Hospital Stats			
	As of October 27	As of November 10	Percent Change
Total Beds Available	182	207	13.73% (increase)
Used by Non-Covid Patients	463	445	3.89% (decrease)
Used by Covid Patients	48	43	10.42% (decrease)

*"Beds available" is now calculated based on beds that are staffed.

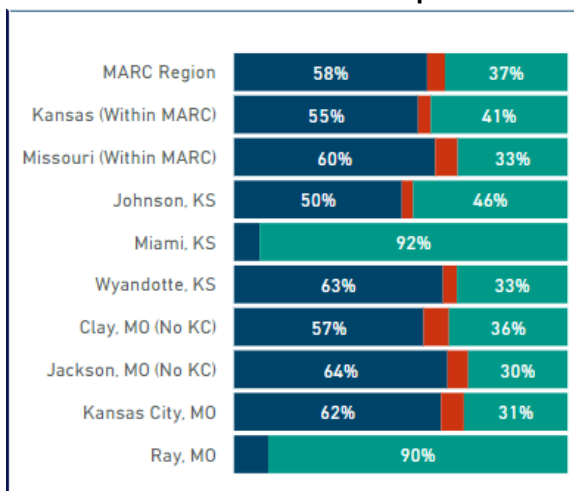
MARC Region Graphical Data

Regional Snapshot

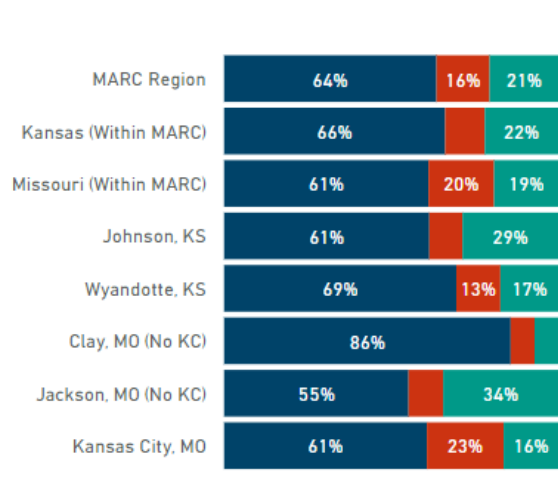


Jurisdiction Comparison on Hospital Resource Usage

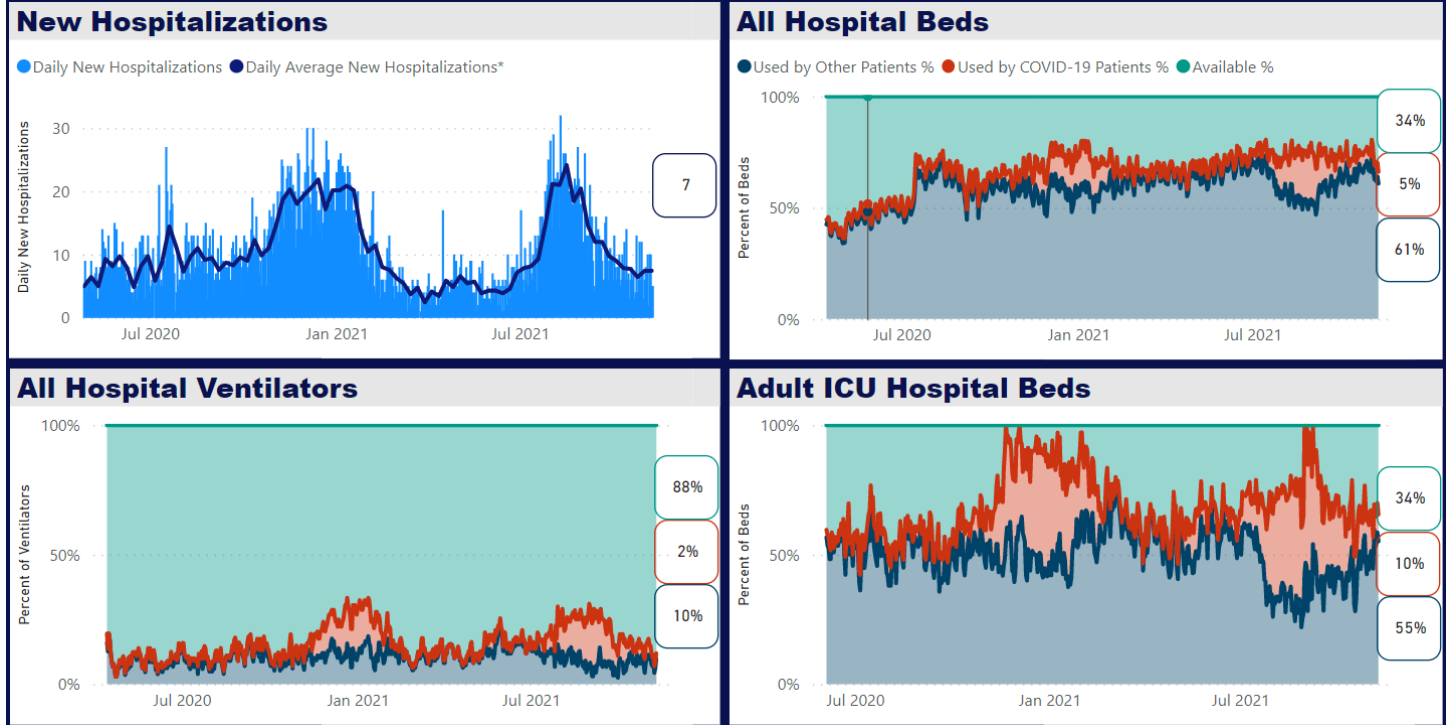
All Hospital Beds



Adult ICU Beds



Eastern Jackson County Hospital Resources Snapshot: Jan 1, 2020 – November 10, 2021



Institute of Health Metrics and Evaluation Hospital Resource Use Projections for Missouri

