

December 15, 2021 COVID-19 Report

December 2-December 15: Cumulative Confirmed Cases by Independence Zip Code**						
Independence Zip Code	Total Reported Cases as of Dec. 1	Rate per 1,000 as of Dec. 1	Number of New Cases Since Dec. 1	Percent Increase in the Number of Cases	Total Estimated Cases to date	Rate per 1,000 residents to date
64050	3106	139.27	153	4.93%	3259	146.13
64052	3130	155.74	233	7.44%	3363	167.33
64053	772	142.86	70	9.07%	842	155.81
64054	360	100.08	9	2.50%	369	102.59
64055	4906	144.49	282	5.75%	5188	152.79
64056	2531	147.72	113	4.46%	2644	154.31
64057	2447	166.62	105	4.29%	2552	173.77
64058	784	112.98	0	0.00%	784	112.98
64015	3450	109.90	25	0.72%	3475	110.70
64016	461	99.25	0	0.00%	461	99.25
Total	21947	137.04	990	4.51%	22937	143.22

**Data is preliminary due to a delay in laboratory reporting. Updates will be provided in subsequent reports.

***On July 15, 2021, the City took over communicable disease reporting from the County. Since that date, only cases for Independence citizens within 64058, 64015, and 64016 will be included in new data and delays are expected. As historical data is analyzed, these rows will be updated to include only Independence residents.

Case rate by Independence Zip Code: Week-to-Week Comparison			
Independence Zip Code	Cases per 1,000 residents December 1st to December 7th	Cases per 1,000 residents December 8th to December 14th	Change in rate
64050	3.50	2.74	-22%
64052	6.67	3.48	-48%
64053	7.59	3.33	-56%
64054	1.39	0.83	-40%
64055	4.54	3.15	-31%
64056	2.92	2.51	-14%
64057	3.95	2.32	-41%
64058	0.00	0.00	---
64015	0.35	0.35	0%
64016	0.00	0.00	---

Community Transmission

We are currently experiencing **high** community transmission. There were 217.30 new cases reported per 100,000 residents in the City of Independence in the past 7 days and 331.56 new cases per 100,000 residents in the City of Independence in the 7 days prior to that. Currently we are seeing a percent positivity of 20.63% for the past 7 days.

To date, the City of Independence has seen **178** confirmed cases among staff.

Please note: Positive rates should be at or below 5% for at least 14 days before a state or country can safely reopen, according to the World Health Organization. The Harvard Global Health group estimates that communities need to test widely enough so that the number of people testing positive for the virus is 3% or lower in order adequately suppress the pandemic. In the US, the current positive rate is **7.5%**.

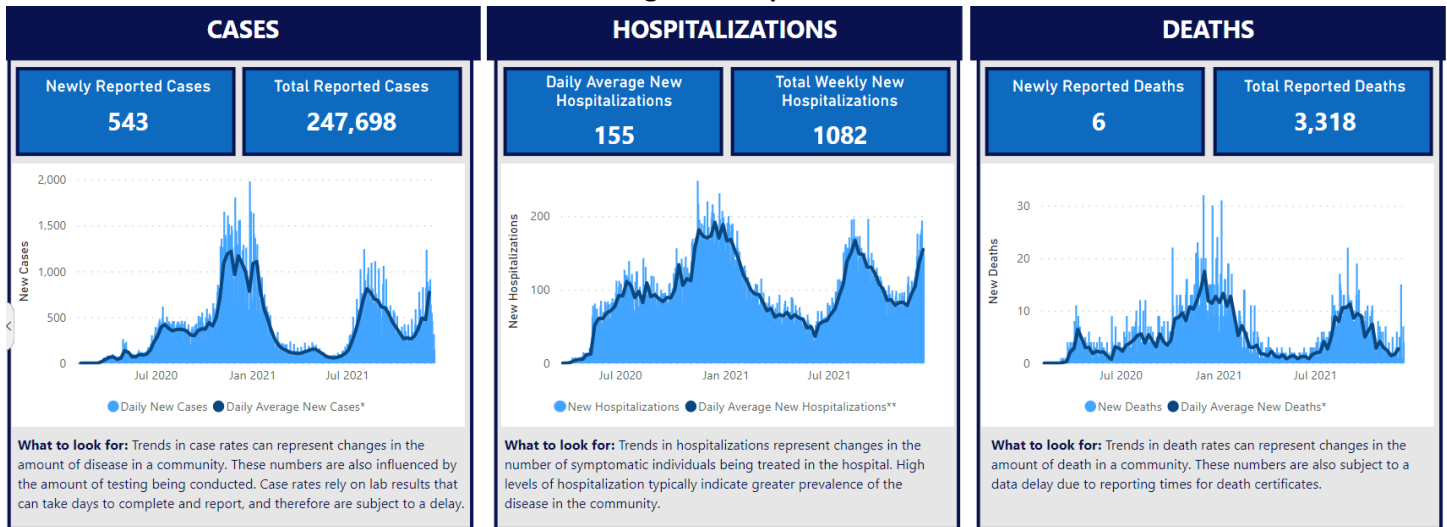
Eastern Jackson County Comparison to Independence		
	Eastern Jackson County	Independence
Rolling Average Percent Positive	15.24%	20.63%
Total Deaths	560	266
Deaths in the Last 7 Days	0	3

MARC Eastern Jackson County Hospital Stats			
	As of December 1	As of December 15	Percent Change
Total Beds Available	148	150	1.35% (increase)
Used by Non-Covid Patients	456	435	4.61% (decrease)
Used by Covid Patients	91	121	32.97% (increase)

*"Beds available" is now calculated based on beds that are staffed.

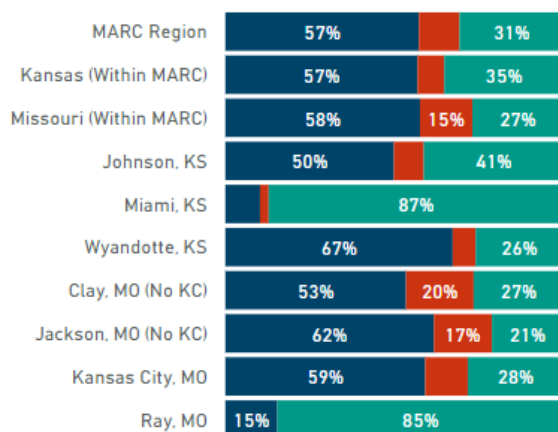
MARC Region Graphical Data

Regional Snapshot

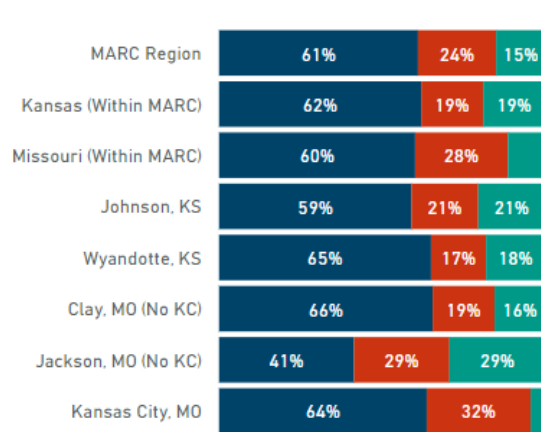


Jurisdiction Comparison on Hospital Resource Usage

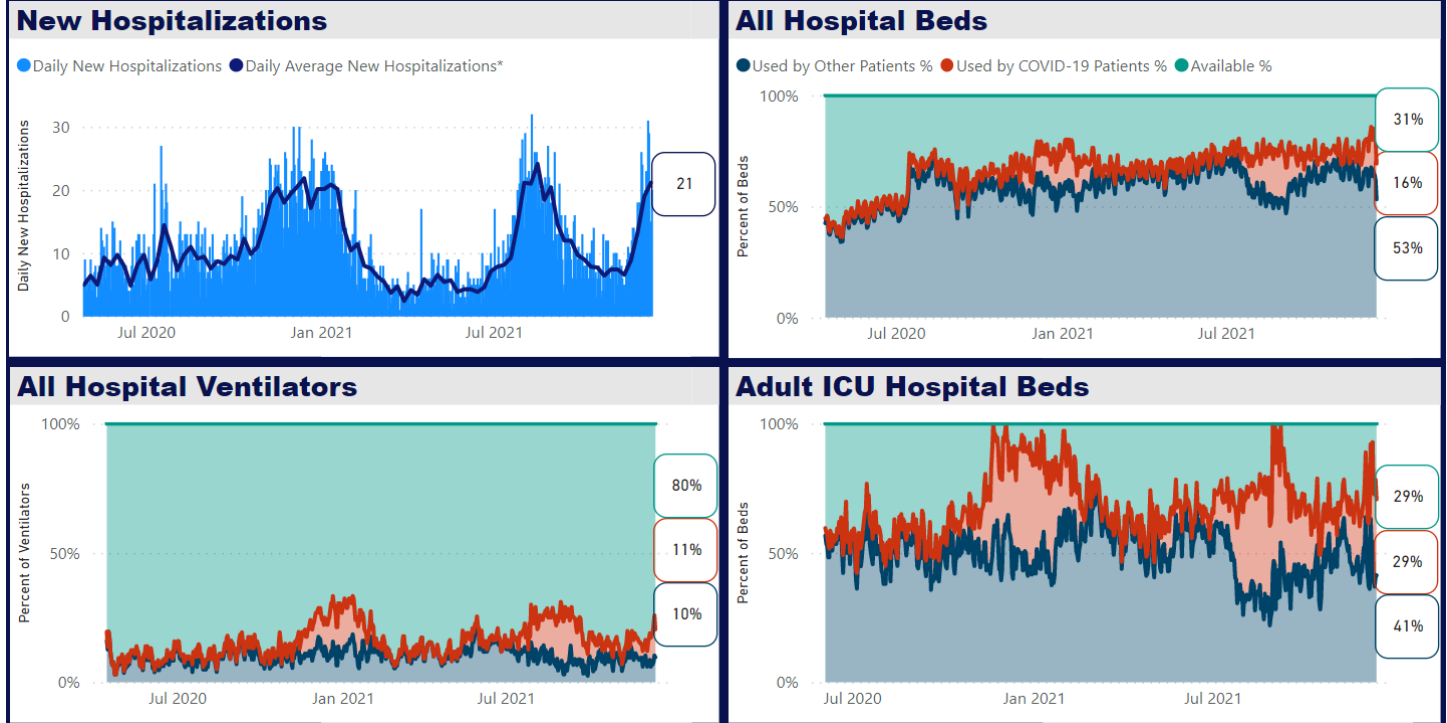
All Hospital Beds



Adult ICU Beds



Eastern Jackson County Hospital Resources Snapshot: Jan 1, 2020 – December 15, 2021



Institute of Health Metrics and Evaluation Hospital Resource Use Projections for Missouri

