

Legend

Addresses

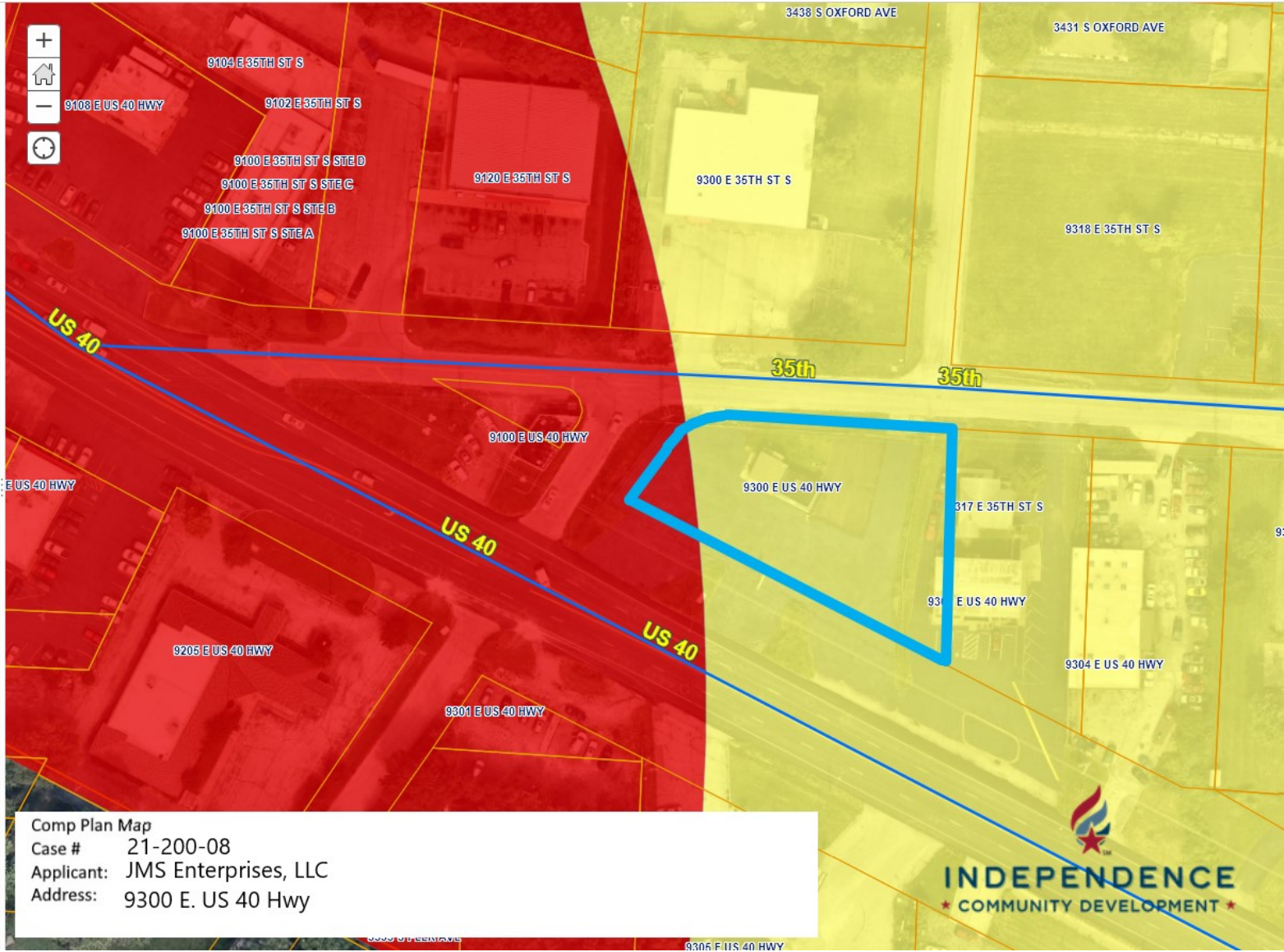
Major Roads

Parcels

Proposed Land Use (Comp Plan)

- Residential Neighborhoods
- Residential Urban Neighborhoods
- Mixed Use
- Neighborhood Commercial
- Community Commercial
- Regional Commercial
- Office
- Business Park
- Industrial
- Civic / Public
- Community Attractions & Tourism
- Parks
- Agricultural
- Invalid Rule

City Limit



Comp Plan Map
Case # 21-200-08
Applicant: JMS Enterprises, LLC
Address: 9300 E. US 40 Hwy

