

December 29, 2021 COVID-19 Report

December 16-December 29: Cumulative Confirmed Cases by Independence Zip Code**						
Independence Zip Code	Total Reported Cases as of Dec. 1	Rate per 1,000 as of Dec. 1	Number of New Cases Since Dec. 15	Percent Increase in the Number of Cases	Total Estimated Cases to date	Rate per 1,000 residents to date
64050	3259	146.13	238	7.30%	3497	156.80
64052	3363	167.33	203	6.04%	3566	177.43
64053	842	155.81	48	5.70%	890	164.69
64054	369	102.59	14	3.79%	383	106.48
64055	5188	152.79	328	6.32%	5516	162.46
64056	2644	154.31	149	5.64%	2793	163.01
64057	2552	173.77	121	4.74%	2673	182.01
64058	784	112.98	0	0.00%	784	112.98
64015	3475	110.70	34	0.98%	3509	111.78
64016	461	99.25	7	1.52%	468	100.75
Total	22937	143.22	1142	4.98%	24079	150.35

**Data is preliminary due to a delay in laboratory reporting. Updates will be provided in subsequent reports.

***On July 15, 2021, the City took over communicable disease reporting from the County. Since that date, only cases for Independence citizens within 64058, 64015, and 64016 will be included in new data and delays are expected. As historical data is analyzed, these rows will be updated to include only Independence residents.

Case rate by Independence Zip Code: Week-to-Week Comparison			
Independence Zip Code	Cases per 1,000 residents December 15th to December 21st	Cases per 1,000 residents December 22nd to December 28th	Change in rate
64050	5.60	1.70	-70%
64052	4.98	2.94	-41%
64053	4.81	1.11	-77%
64054	1.67	0.83	-50%
64055	4.68	2.62	-44%
64056	4.03	2.51	-38%
64057	4.36	2.79	-36%
64058	0.00	0.00	--
64015	0.45	0.41	-7%
64016	0.65	0.65	0%

Community Transmission

We are currently experiencing **high** community transmission. There were 295 new cases reported per 100,000 residents in the City of Independence in the past 7 days and 566 new cases per 100,000 residents in the City of Independence in the 7 days prior to that. Currently we are seeing a percent positivity of 23.51% for the past 7 days.

To date, the City of Independence has seen **199** confirmed cases among staff.

Please note: Positive rates should be at or below 5% for at least 14 days before a state or country can safely reopen, according to the World Health Organization. The Harvard Global Health group estimates that communities need to test widely enough so that the number of people testing positive for the virus is 3% or lower in order adequately suppress the pandemic. In the US, the current positive rate is **7.2%**.

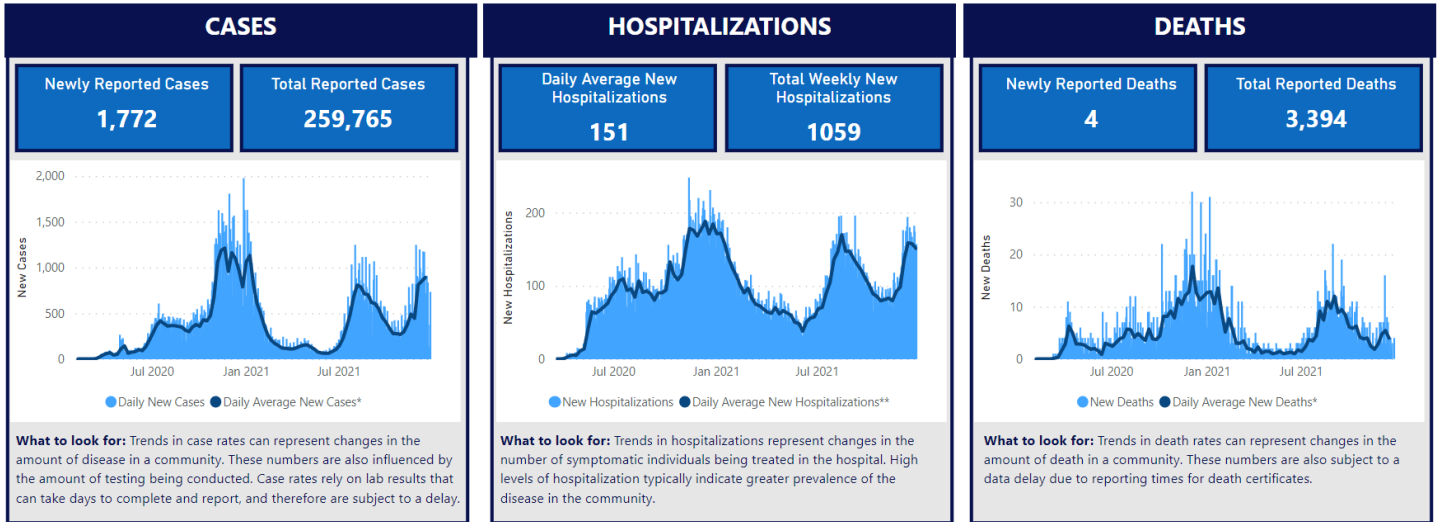
Eastern Jackson County Comparison to Independence		
	Eastern Jackson County	Independence
Rolling Average Percent Positive	19.01%	23.51%
Total Deaths	584	275
Deaths in the Last 7 Days	10	5

MARC Eastern Jackson County Hospital Stats			
	As of December 15	As of December 29	Percent Change
Total Beds Available	150	152	1.33% (increase)
Used by Non-Covid Patients	435	363	16.55% (decrease)
Used by Covid Patients	121	151	24.79% (increase)

*"Beds available" is now calculated based on beds that are staffed.

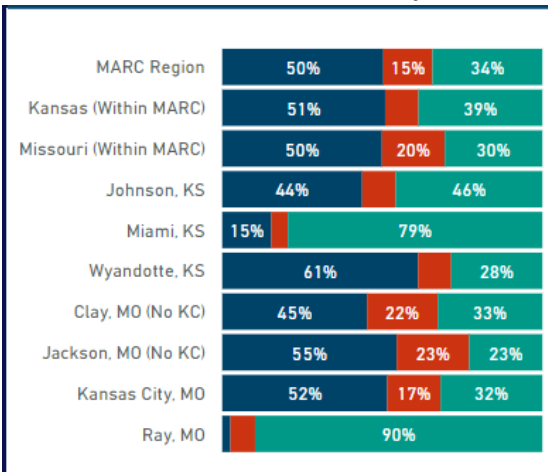
MARC Region Graphical Data

Regional Snapshot

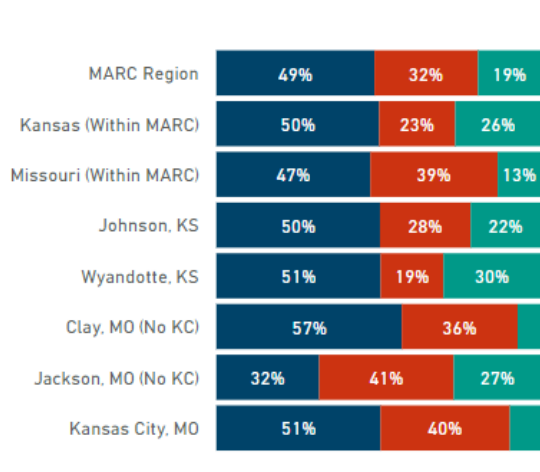


Jurisdiction Comparison on Hospital Resource Usage

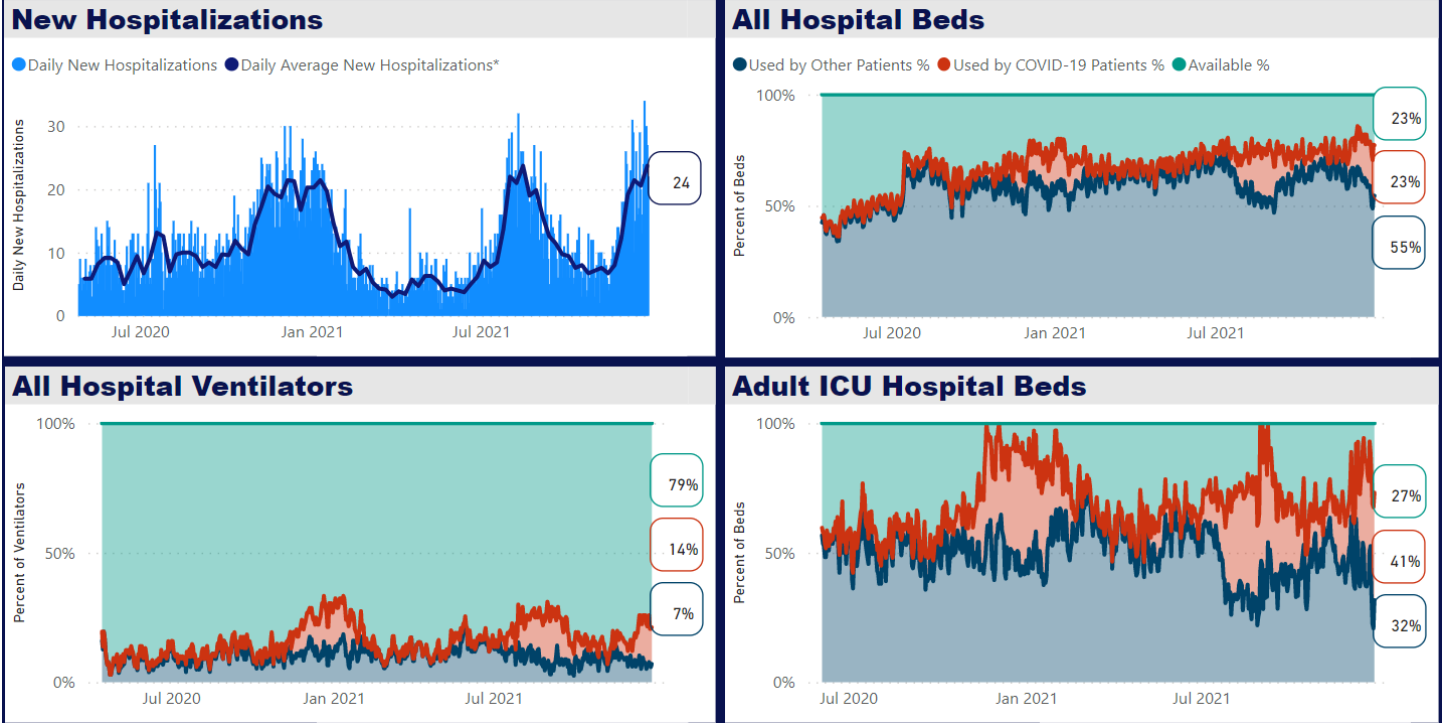
All Hospital Beds



Adult ICU Beds



Eastern Jackson County Hospital Resources Snapshot: Jan 1, 2020 – December 29, 2021



Institute of Health Metrics and Evaluation Hospital Resource Use Projections for Missouri

