

February 02, 2022 COVID-19 Report

Community Transmission

We are currently experiencing **high** community transmission. There were 534 new cases reported per 100,000 residents in the City of Independence in the past 7 days and 1,077 new cases per 100,000 residents in the City of Independence in the 7 days prior to that. Currently we are seeing a **percent positivity of 37.15%** for the past 7 days.

To date, the City of Independence has seen **248** confirmed cases among staff.

Please note: Positive rates should be at or below 5% for at least 14 days before a state or country can safely reopen, according to the World Health Organization. The Harvard Global Health group estimates that communities need to test widely enough so that the number of people testing positive for the virus is 3% or lower in order adequately suppress the pandemic. In the US, the current positive rate is **23.9%**.

City of Independence Gating Criteria

1. Sustained decrease in the number of confirmed cases and positive rate for at least four weeks.
2. Adequate PPE supply for hospitals, long-term care facilities, and first responders.
3. Sustained decrease in hospitalizations.
4. Adequate access to testing and contact tracing.

Recommendation:

Based on the current percent positivity and high community transmission, staff recommend continued use of a tight-fitting, protective masks and avoidance of large gatherings whenever possible.

January 13-February 2: Cumulative Confirmed Cases by Independence Zip Code**						
Independence Zip Code	Total Reported Cases as of Jan. 12	Rate per 1,000 as of Jan. 12	Number of New Cases Since Jan. 12	Percent Increase in the Number of Cases	Total Estimated Cases to date	Rate per 1,000 residents to date
64050	4022	180.34	956	23.77%	4978	223.21
64052	4041	201.06	895	22.15%	4936	245.60
64053	998	184.68	174	17.43%	1172	216.84
64054	400	111.20	40	10.00%	440	122.32
64055	6333	186.52	1418	22.39%	7751	228.28
64056	3196	186.53	731	22.87%	3927	229.19
64057	3068	208.91	593	19.33%	3661	249.29
64058	784	112.98	0	0.00%	784	112.98
64015	3548	113.03	109	3.07%	3657	116.50
64016	469	100.97	10	2.13%	479	103.12
Total	26859	167.71	4926	18.34%	31785	198.47

**Data is preliminary due to a delay in laboratory reporting. Updates will be provided in subsequent reports.

***On July 15, 2021, the City took over communicable disease reporting from the County. Since that date, only cases for Independence citizens within 64058, 64015, and 64016 will be included in new data and delays are expected. As historical data is analyzed, these rows will be updated to include only Independence residents.

Case rate by Independence Zip Code: Week-to-Week Comparison			
Independence Zip Code	Cases per 1,000 residents January 12th to January 18th	Cases per 1,000 residents January 19th to January 25th	Change in rate
64050	14.39	10.94	-24%
64052	17.46	12.54	-28%
64053	12.40	9.07	-27%
64054	4.73	3.06	-35%
64055	15.55	11.60	-25%
64056	15.82	11.79	-25%
64057	15.59	9.81	-37%
64058	0.00	0.00	--
64015	1.40	0.80	-43%
64016	0.65	0.86	33%

Case rate by Independence Zip Code: Week-to-Week Comparison			
Independence Zip Code	Cases per 1,000 residents January 19th to January 25th	Cases per 1,000 residents January 26th to February 1st	Change in rate
64050	10.94	6.14	-44%
64052	12.54	5.32	-58%
64053	9.07	4.07	-55%
64054	3.06	0.83	-73%
64055	11.60	5.92	-49%
64056	11.79	6.07	-49%
64057	9.81	4.77	-51%
64058	0.00	0.00	--
64015	0.80	0.35	-56%
64016	0.86	0.43	-50%

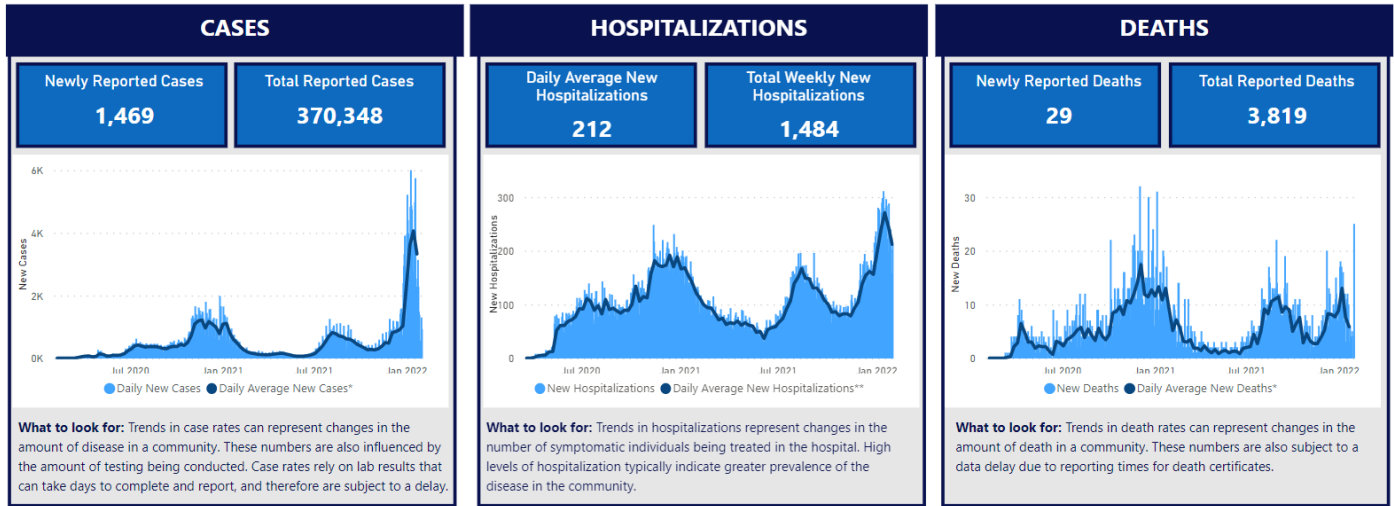
Eastern Jackson County Comparison to Independence		
	Eastern Jackson County	Independence
Rolling Average Percent Positive	27.14%	37.15%
Total Deaths	681	350
Deaths in the Last 7 Days	9	6

MARC Eastern Jackson County Hospital Stats			
	As of January 12	As of February 2	Percent Change
Total Beds Available	124	153	23.39% (increase)
Used by Non-Covid Patients	349	354	1.43% (increase)
Used by Covid Patients	205	156	23.90% (decrease)

*"Beds available" is now calculated based on beds that are staffed.

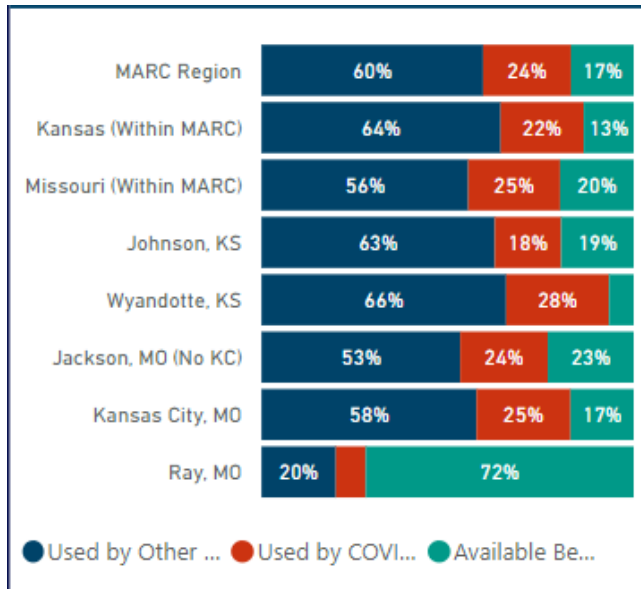
MARC Region Graphical Data

Regional Snapshot

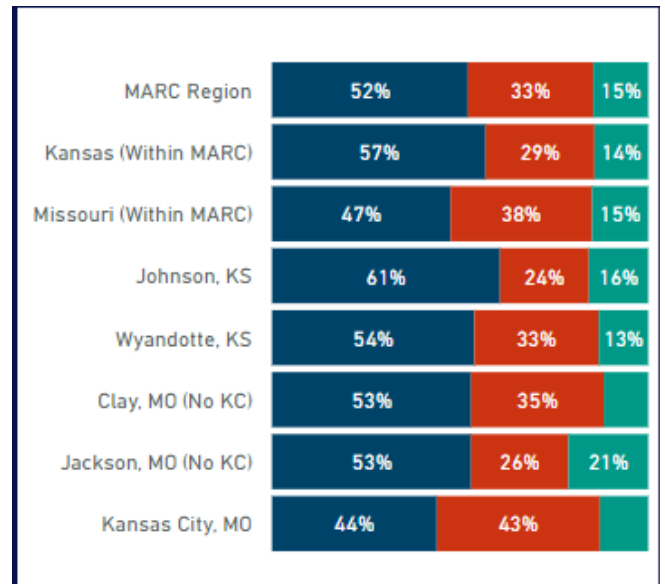


Jurisdiction Comparison on Hospital Resource Usage

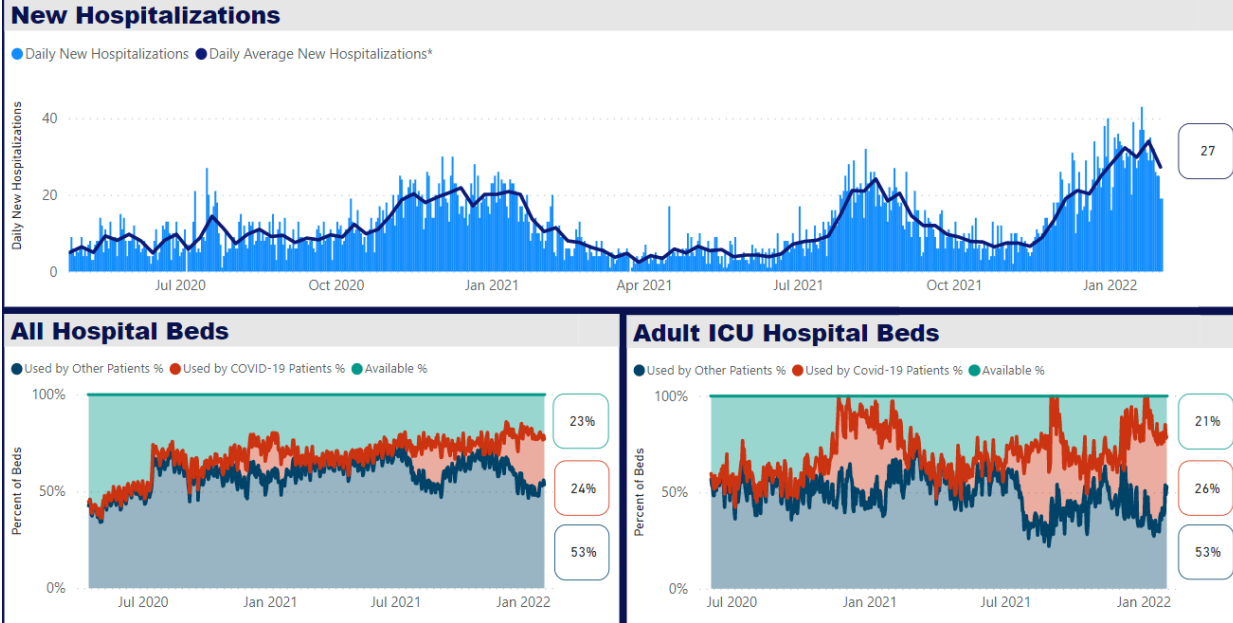
All Hospital Beds



Adult ICU Beds



Eastern Jackson County Hospital Resources Snapshot: Jan 1, 2020 – Feb 02, 2022



Institute of Health Metrics and Evaluation Hospital Resource Use Projections for Missouri

