

Legend

Major Roads



Parcels



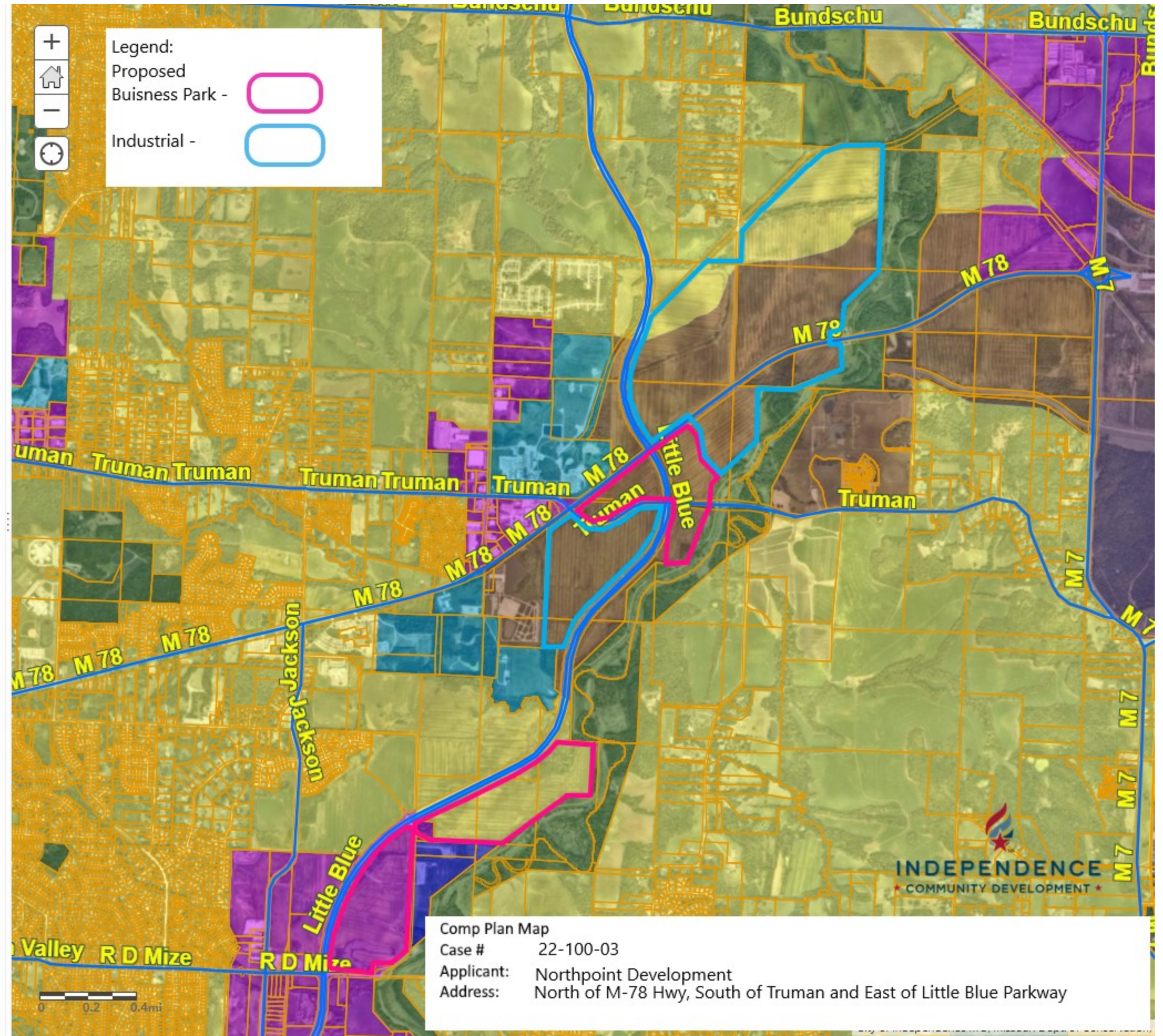
Proposed Land Use (Comp Plan)

- Residential Neighborhoods
- Residential Urban Neighborhoods
- Mixed Use
- Neighborhood Commercial
- Community Commercial
- Regional Commercial
- Office
- Business Park
- Industrial
- Civic / Public
- Community Attractions & Tourism
- Parks
- Agricultural
- Invalid Rule

Municipal Boundaries 2022



Legend:
Proposed
Buisness Park -
Industrial -



Comp Plan Map
Case # 22-100-03
Applicant: Northpoint Development
Address: North of M-78 Hwy, South of Truman and East of Little Blue Parkway

