

# PRELIMINARY PLAT

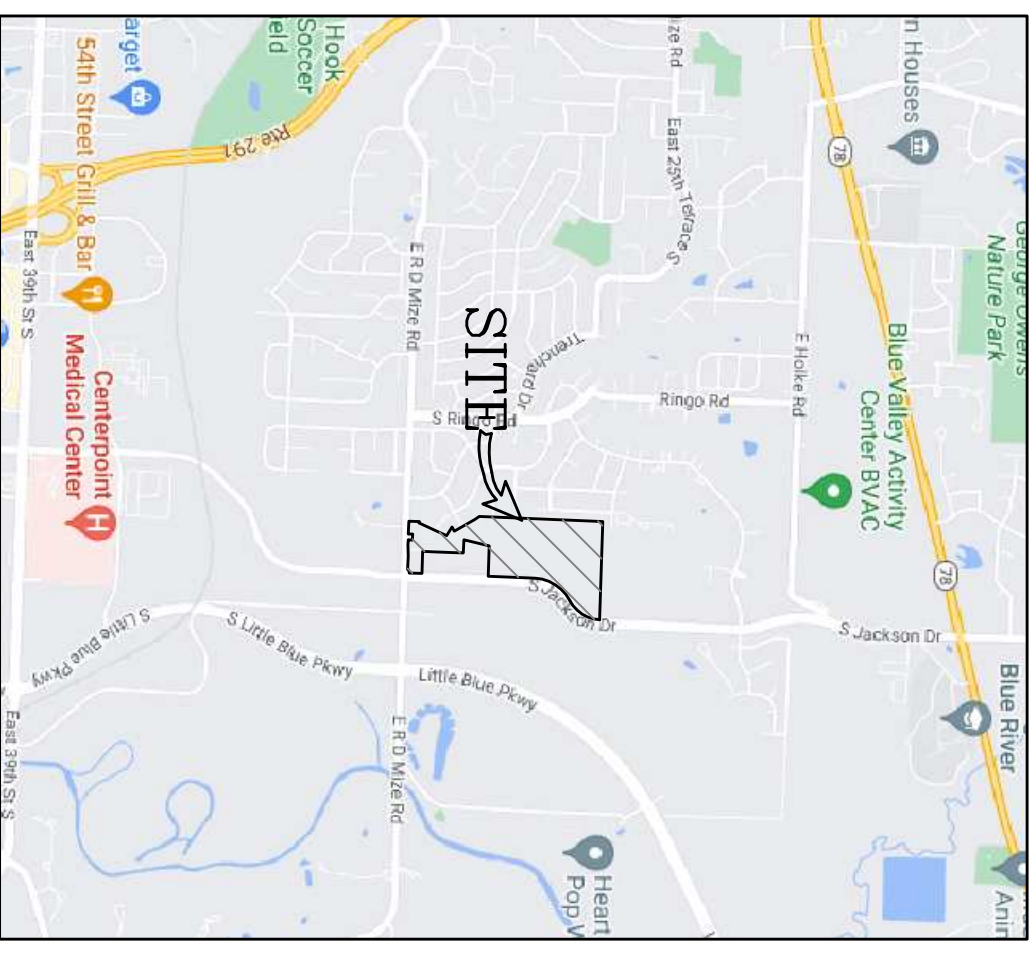
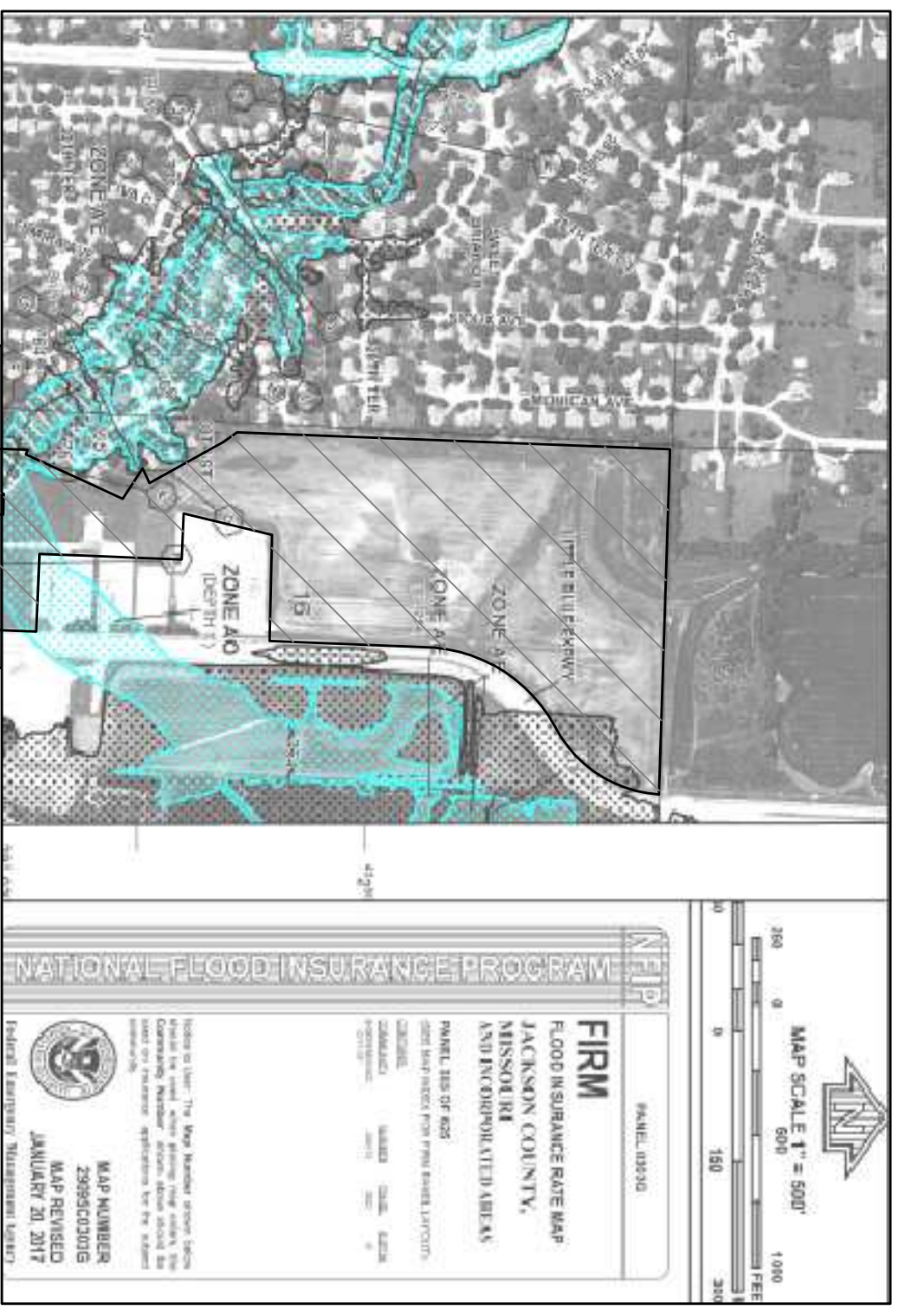
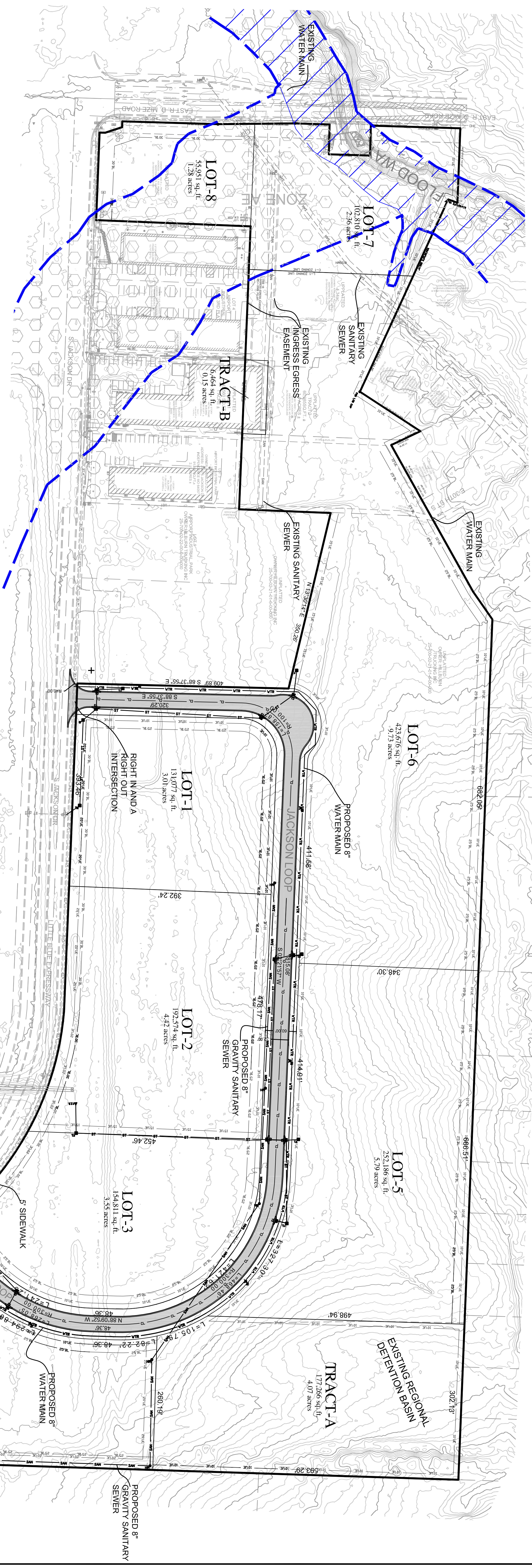
## JACKSON DRIVE INDUSTRIAL PARK

### LOTS 1 THRU 8 AND TRACTS A & B

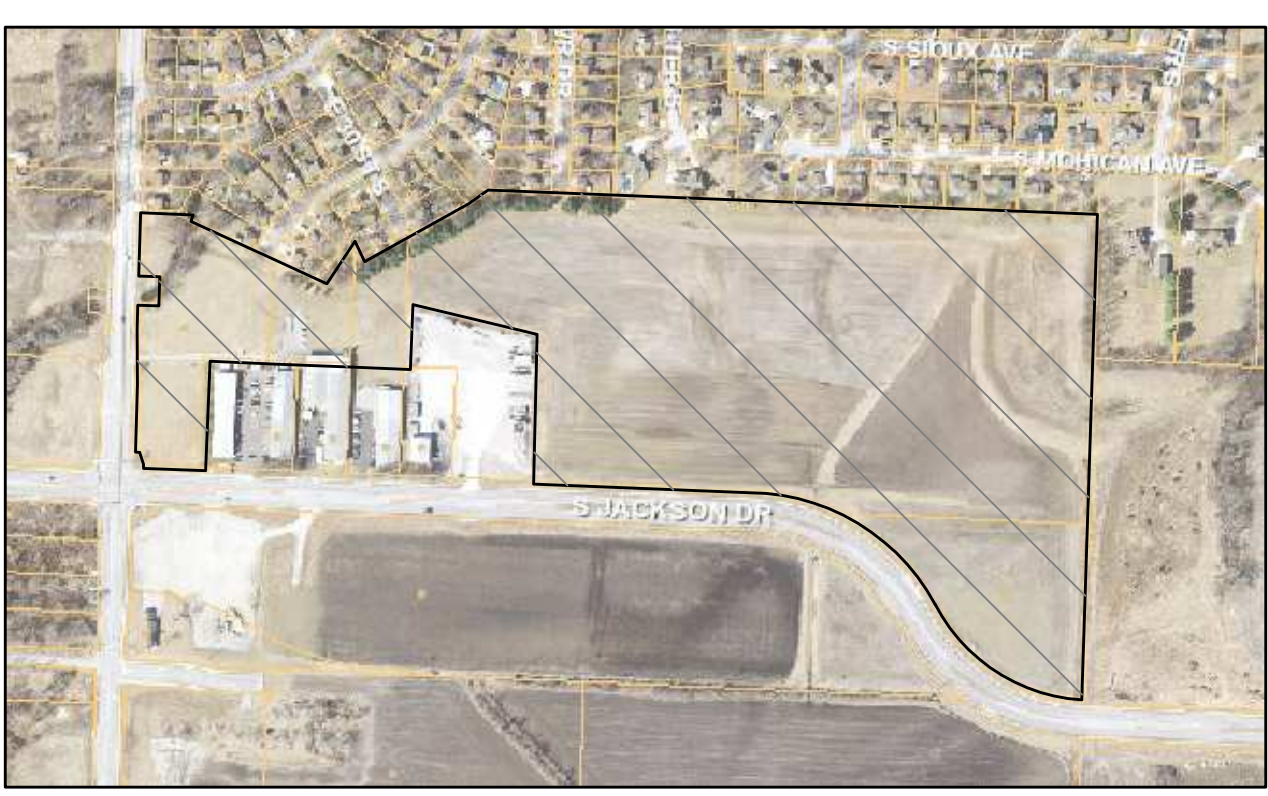
#### INDEPENDENCE, JACKSON COUNTY, MISSOURI

DEVELOPER:  
 MISSOURI RE  
 INDEPENDENCE, MO  
 309.625.9299

- NOTE:
1. TOTAL LAND AREA = 42.58 ac.
  2. TOTAL NUMBER OF PROPOSED LOTS = 8 LOTS
  3. ALL ROADS AND UTILITIES SHALL BE BUILT TO CITY CODES AND DEDICATED TO THE CITY.
  4. ROADS SHALL BE 32' WIDE WITH 60' OF ROW.
  5. THIS DEVELOPMENT IS PART OF A REGIONAL BASIN LOCATED ON THE PROPOSED TRACT A.
  6. ALL STORM SEWERS SHALL BE BUILT TO CITY STANDARD AND DEDICATED TO THE CITY ALONG WITH ANY EASEMENTS REQUIRED.

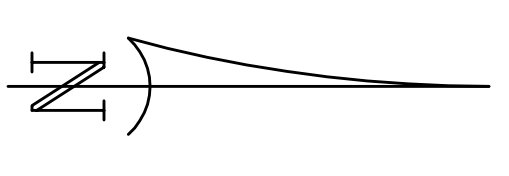
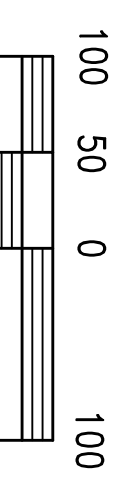


LOCATION MAP



AERIAL MAP

SYMBOL LEGEND		LINE LEGEND	
PROPOSED	EXISTING	PROPOSED	EXISTING
Manhole	Manhole	Storm Line	Storm Line
Catch Basin	Catch Basin	Sanitary Line	Sanitary Line
Junction Box	Junction Box	Water Line	Water Line
Raised Manhole	Raised Manhole	Building Line	Building Line
Fire Hydrant	Fire Hydrant	Easement Line	Easement Line
Flow Meter	Flow Meter	4" Sewer	4" Sewer
Water Meter	Water Meter	2" Sewer	2" Sewer
Water Valve	Water Valve	2" Water	2" Water
Water Meter	Water Meter	4" Water	4" Water
Shut-off	Shut-off	Gas Line	Gas Line
Shut-off	Shut-off	Overhead Telephone Line	Overhead Telephone Line
Utility Pole	Utility Pole	Underground Telephone Line	Underground Telephone Line
Gas Meter	Gas Meter	Underground Electrical Line	Underground Electrical Line
Electric Transformer	Electric Transformer	Underground Detector Line	Underground Detector Line
Telephone Pole	Telephone Pole		
Color Related	Color Related		
Open Ditch	Open Ditch		



# PRELIMINARY PLAT

**PRELIMINARY PLAT**  
 FOR JACKSON DRIVE INDUSTRIAL PARK  
 LOTS 1 THRU 8 AND TRACTS A & B

JACKSON DRIVE INDUSTRIAL PARK  
 INDEPENDENCE, JACKSON COUNTY, MISSOURI

**Quist Engineering Inc.**  
 Civil Engineering for Residential & Commercial Site Development

821 NE Columbus ST.  
 Lee's Summit, Missouri 64063  
 Phone: (816) 555-9150  
 e-mail = rwalquist@quistengineering.com

DATE	REVISION	BY
3-25-22	- PER CITY COMMENTS	
4-7-22	PER CITY COMMENTS	
4-8-22	PER CITY COMMENTS	

DRAWN BY	RAW
CHECKED BY	RAW
DATE	3-10-22
PROJECT NO.	E21-320
SCALE	1"=50'
	2
	1