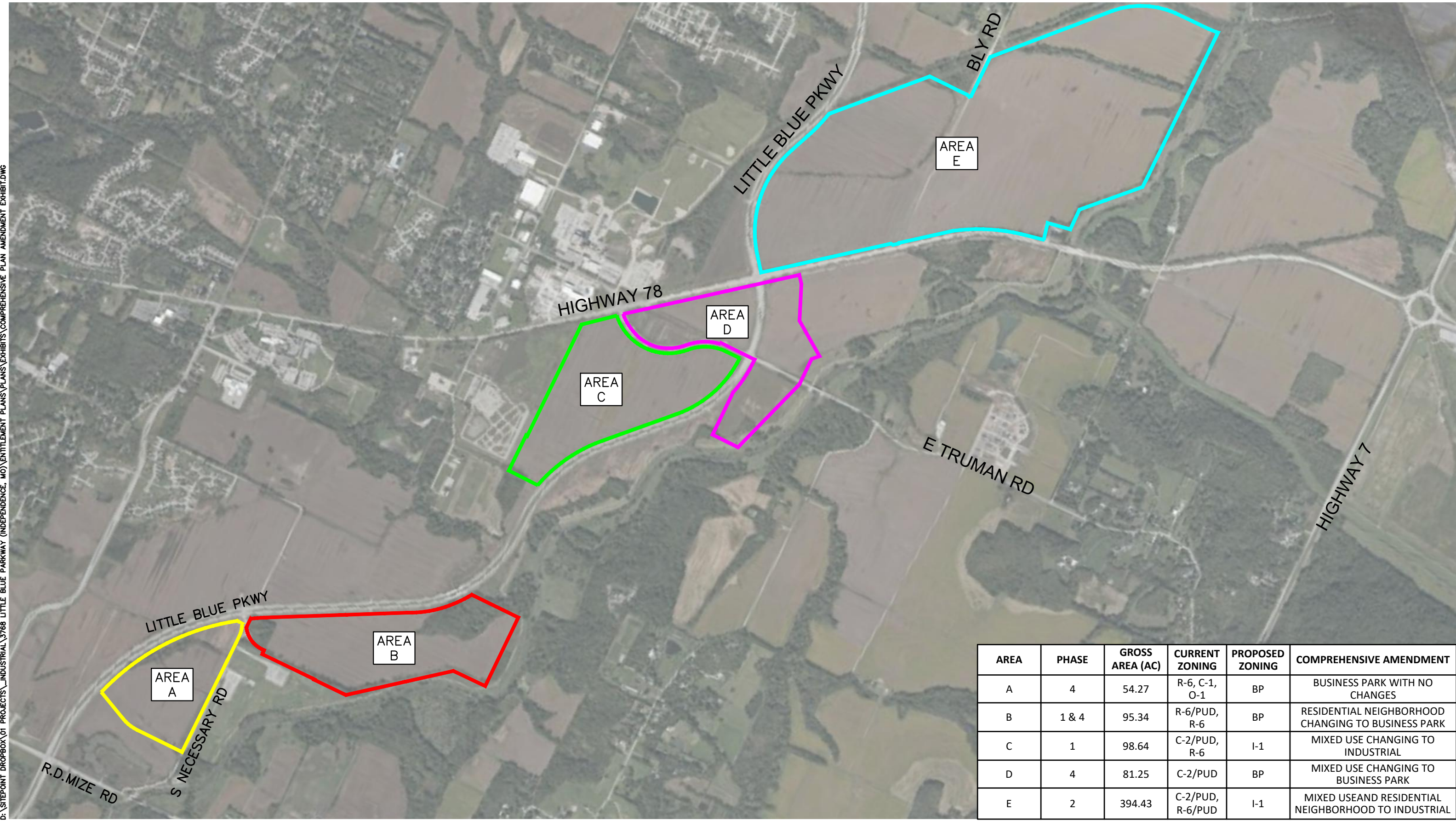


COMPREHENSIVE PLAN AMENDMENT

D:\SITEPOINT DROPBOX\01 PROJECTS\INDUSTRIAL\3768 LITTLE BLUE PARKWAY (INDEPENDENCE, MO)\ENTITLEMENT PLANS\PLANS\EXHIBITS\COMPREHENSIVE PLAN AMENDMENT EXHIBIT.DWG



AREA	PHASE	GROSS AREA (AC)	CURRENT ZONING	PROPOSED ZONING	COMPREHENSIVE AMENDMENT
A	4	54.27	R-6, C-1, O-1	BP	BUSINESS PARK WITH NO CHANGES
B	1 & 4	95.34	R-6/PUD, R-6	BP	RESIDENTIAL NEIGHBORHOOD CHANGING TO BUSINESS PARK
C	1	98.64	C-2/PUD, R-6	I-1	MIXED USE CHANGING TO INDUSTRIAL
D	4	81.25	C-2/PUD	BP	MIXED USE CHANGING TO BUSINESS PARK
E	2	394.43	C-2/PUD, R-6/PUD	I-1	MIXED USE AND RESIDENTIAL NEIGHBORHOOD TO INDUSTRIAL

