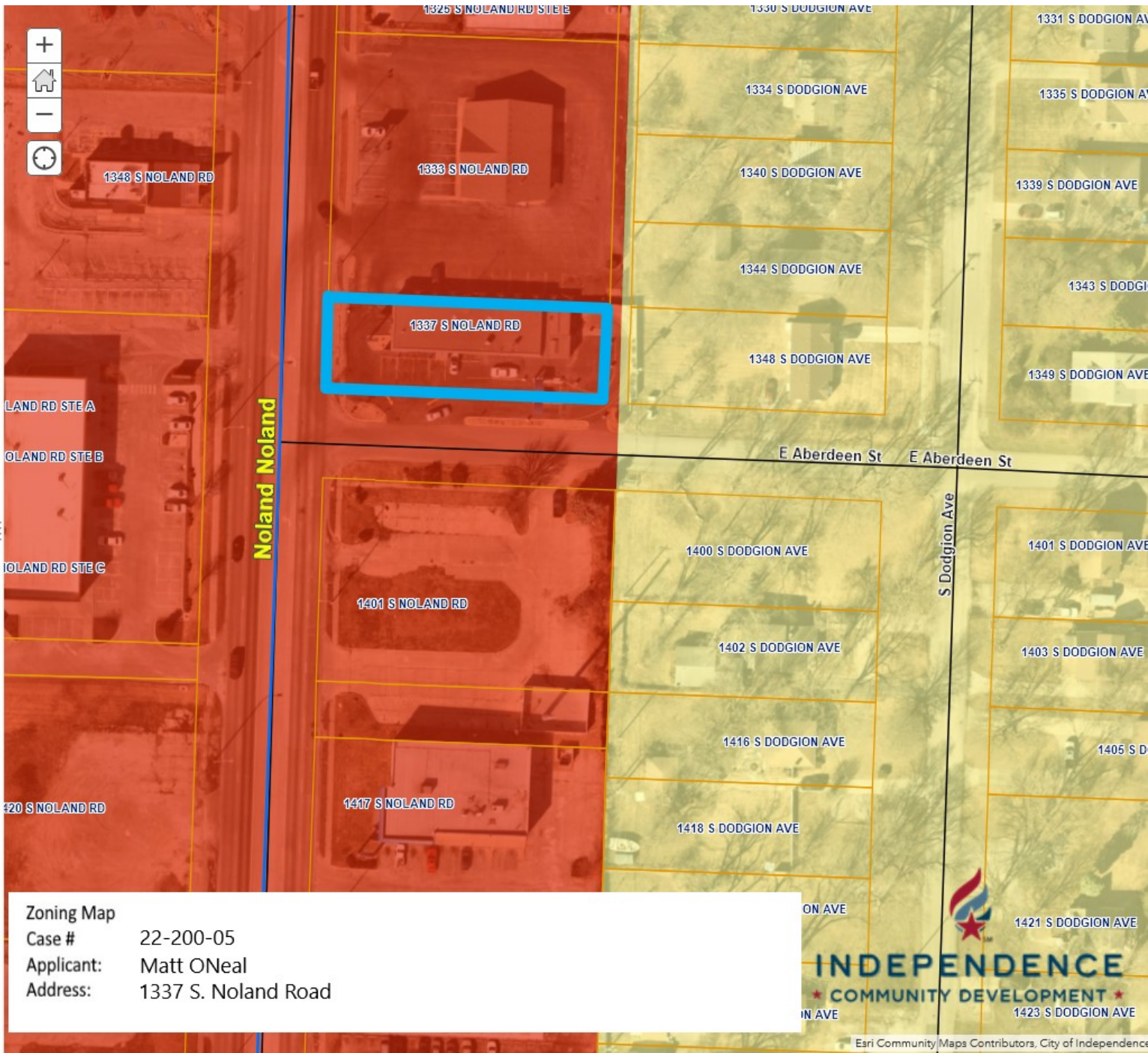


Legend Zoning

-  ARTS
-  Business Park
-  Business Park/PUD
-  Light Commercial
-  Commercial
-  Commercial/Historic Landmark
-  Commercial/PUD
-  Commercial/Special Character
-  Warehouseing
-  Drumm Farm District
-  Industrial
-  Industrial/Jistoric Landmark
-  Industrial Park
-  Office
-  Office/Planned Unit Development
-  Single Family Residential Estate
-  Two Family Residential
-  Two Family Residential Historic Landmark
-  Two Family Residential/PUD
-  Moderate Density Residential/PUD
-  Single Family Residential Large Lot
-  Single Family Res Large Lot/PUD
-  High Density Residential/PUD
-  Single Family Residential Low Density
-  Single Family Residential Low Density/PUD
-  Single Family Residential
-  Single Family Residential/Historic Landmark



**Zoning Map**  
**Case #** 22-200-05  
**Applicant:** Matt O'Neal  
**Address:** 1337 S. Noland Road

