

Legend

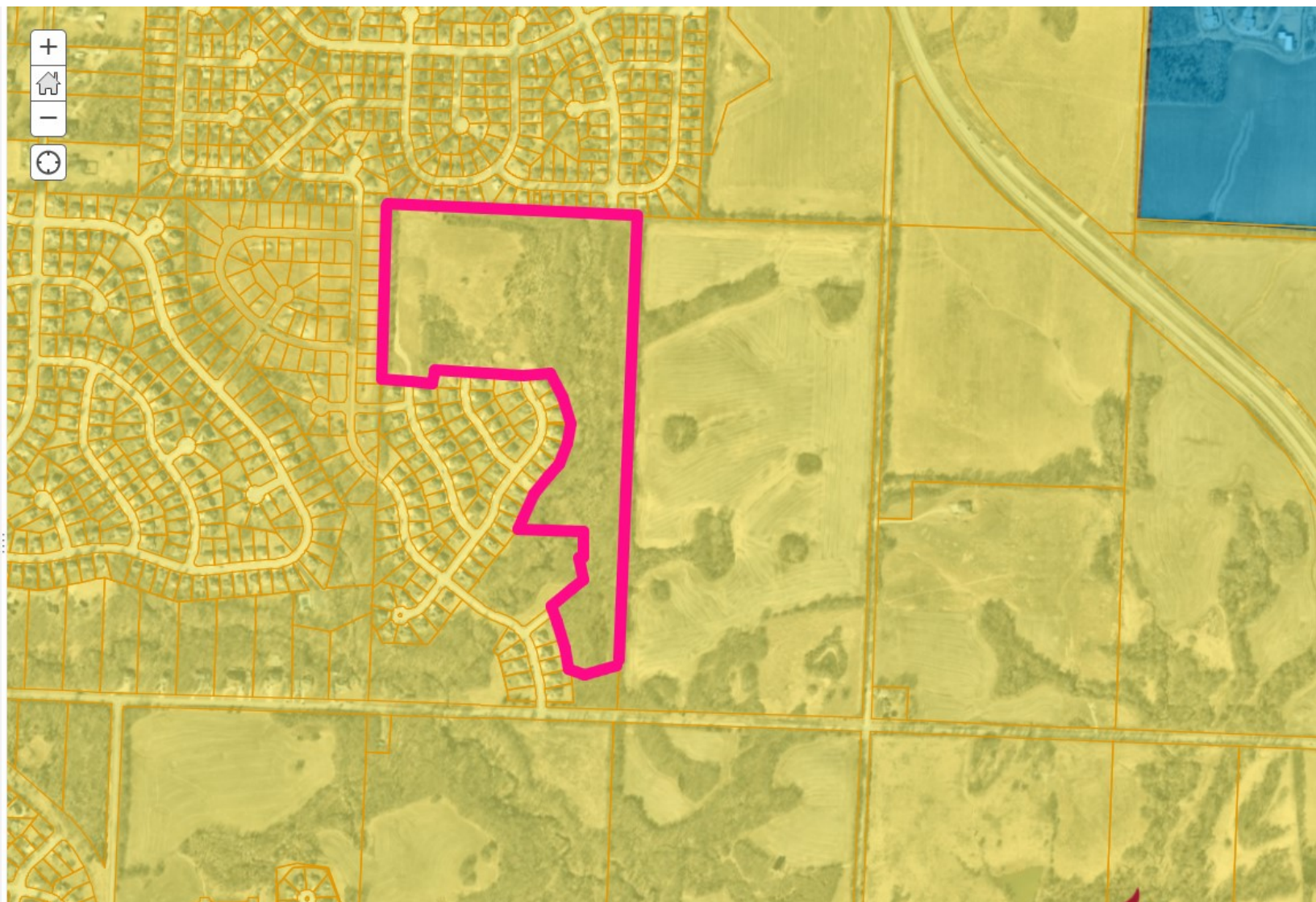
Parcels



Proposed Land Use (Comp Plan)

- Residential Neighborhoods
- Residential Urban Neighborhoods
- Mixed Use
- Neighborhood Commercial
- Community Commercial
- Regional Commercial
- Office
- Business Park
- Industrial
- Civic / Public
- Community Attractions & Tourism
- Parks
- Agricultural
- Invalid Rule

Municipal Boundaries 2022



Comp Plan Map

Case # 22-310-03

Applicant: Andachter Pollard Development LLC

Address: Near 23500 E. Bundschu Road



INDEPENDENCE
★ COMMUNITY DEVELOPMENT ★