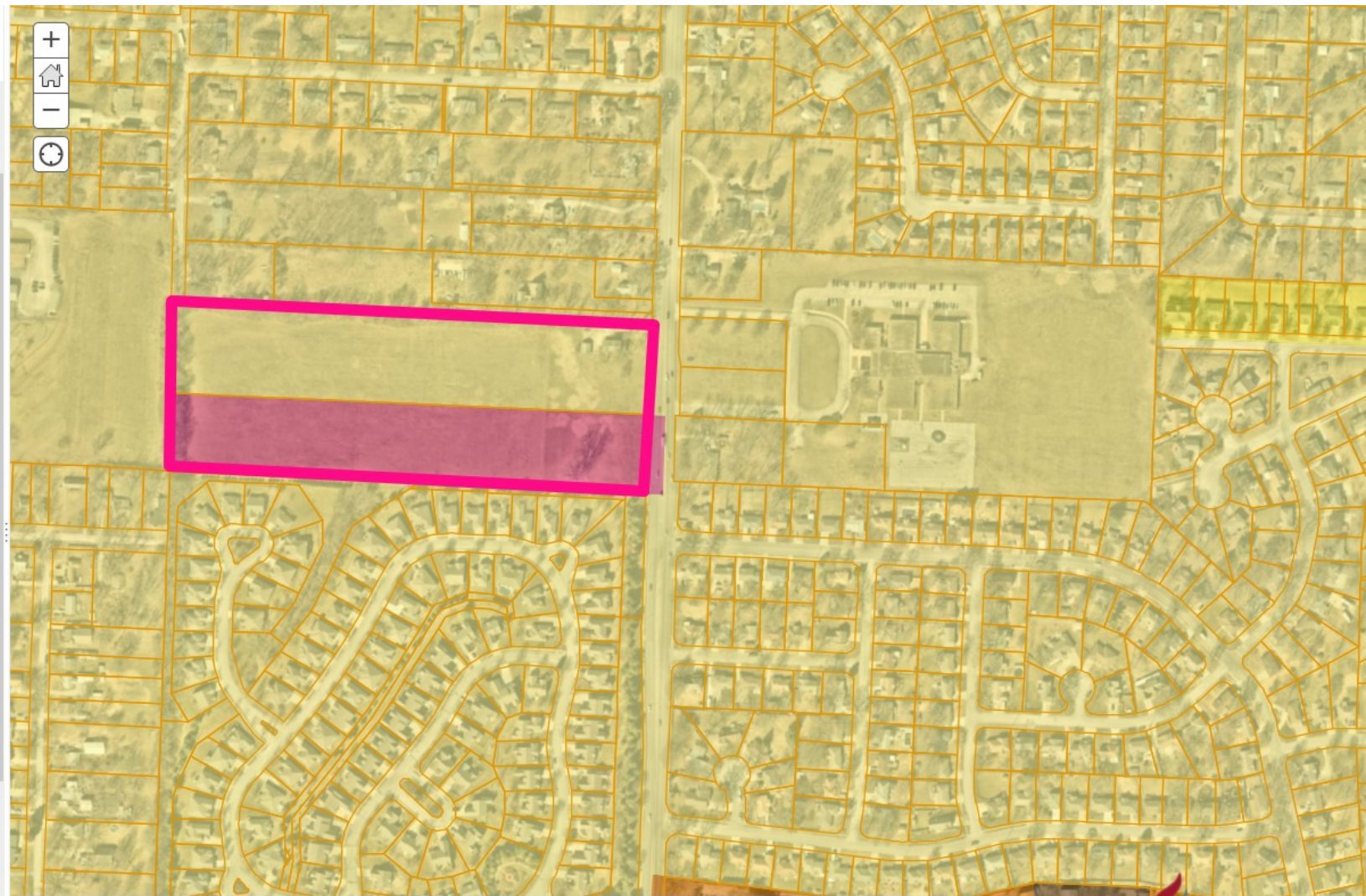


## Legend

### Zoning

- ARTS
- Business Park
- Business Park/PUD
- Light Commercial
- Commercial
- Commercial/Historic Landmark
- Commercial/PUD
- Commercial/Special Character
- Warehouseing
- Drumm Farm District
- Industrial
- Industrial/Historic Landmark
- Industrial Park
- Office
- Office/Planned Unit Development
- Single Family Residential Estate
- Two Family Residential
- Two Family Residential Historic Landmark
- Two Family Residential/PUD
- Moderate Density Residential/PUD
- Single Family Residential Large Lot
- Single Family Res Large Lot/PUD
- High Density Residential/PUD
- Single Family Residential Low Density
- Single Family Residential Low Density/PUD
- Single Family Residential
- Single Family Residential/Historic



**Zoning Map**  
**Case #** 22-125-08  
**Applicant:** Joseph O'Loughlin  
**Address:** 2610, 2612 S. Lees Summit Road