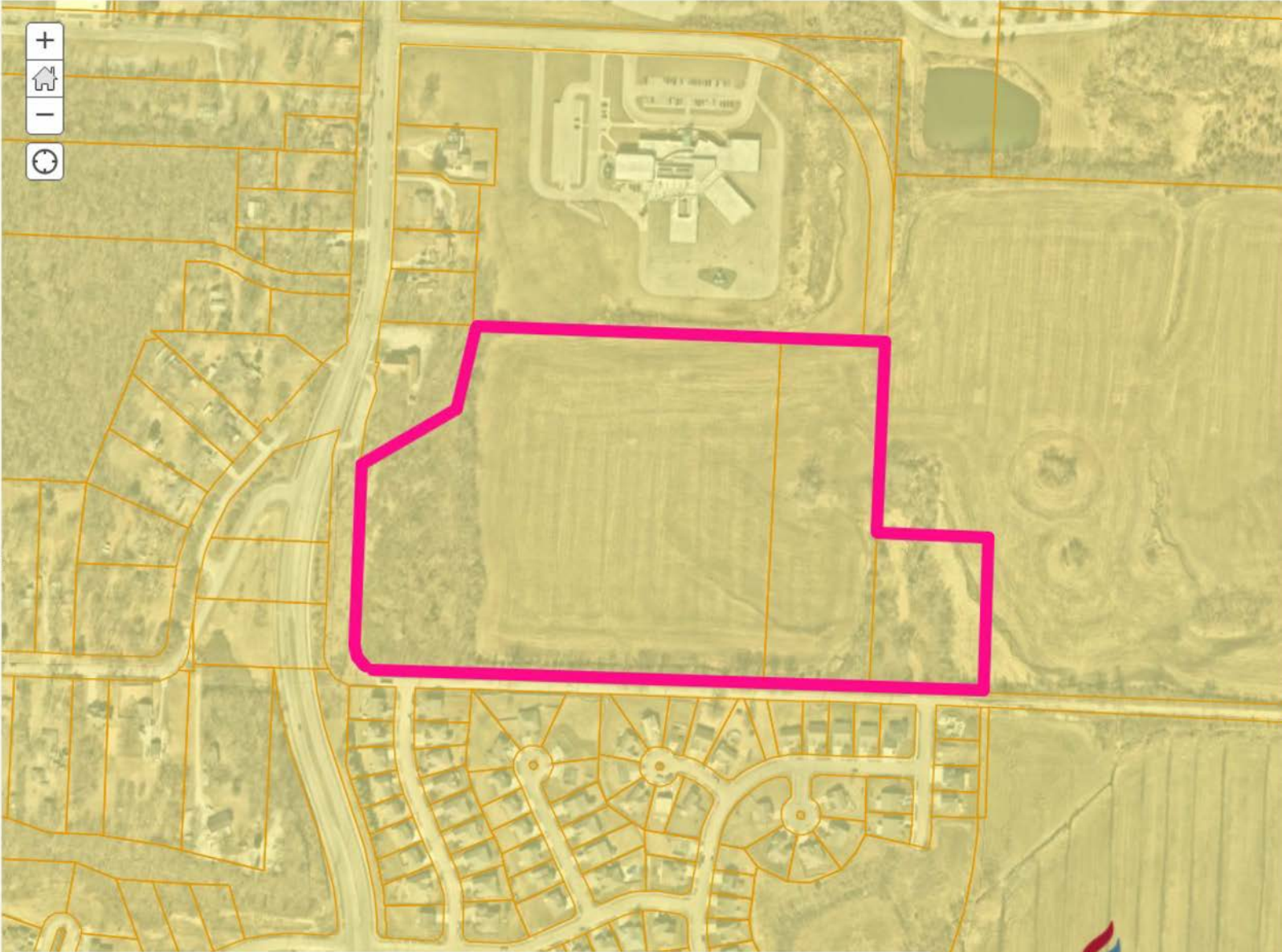


Legend  
Zoning

- ARTS
- Business Park
- Business Park/PUD
- Light Commercial
- Commercial
- Commercial/Historic Landmark
- Commercial/PUD
- Commercial/Special Character
- Warehousing
- Drumm Farm District
- Industrial
- Industrial/Historic Landmark
- Industrial Park
- Office
- Office/Planned Unit Development
- Single Family Residential Estate
- Two Family Residential
- Two Family Residential Historic Landmark
- Two Family Residential/PUD
- Moderate Density Residential/PUD
- Single Family Residential Large Lot
- Single Family Res Large Lot/PUD
- High Density Residential/PUD
- Single Family Residential Low Density
- Single Family Residential Low Density/PUD
- Single Family Residential
- Single Family Residential/Historic



**Zoning Map**  
**Case #** 22-310-02  
**Applicant:** Kevin Stallings, D&D Development  
**Address:** Northeast of S. Jackson Drive and E. Necessary Road



**INDEPENDENCE**  
COMMUNITY DEVELOPMENT