

Unhoused Discussion



★ A GREAT AMERICAN STORY ★

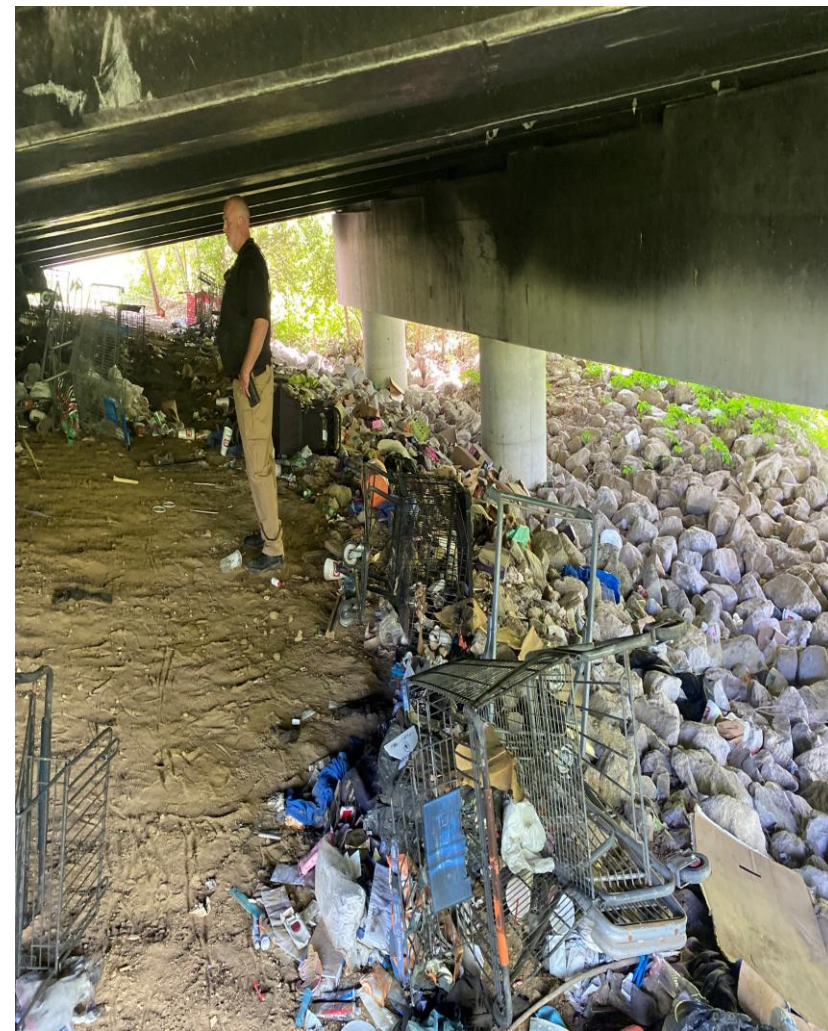
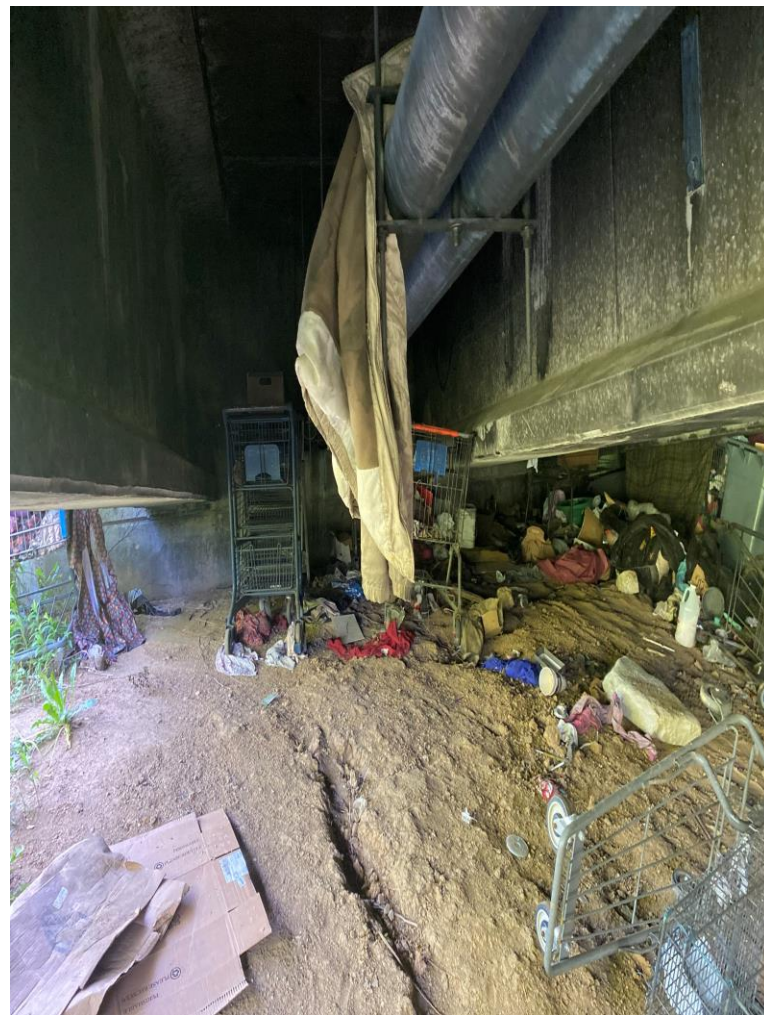
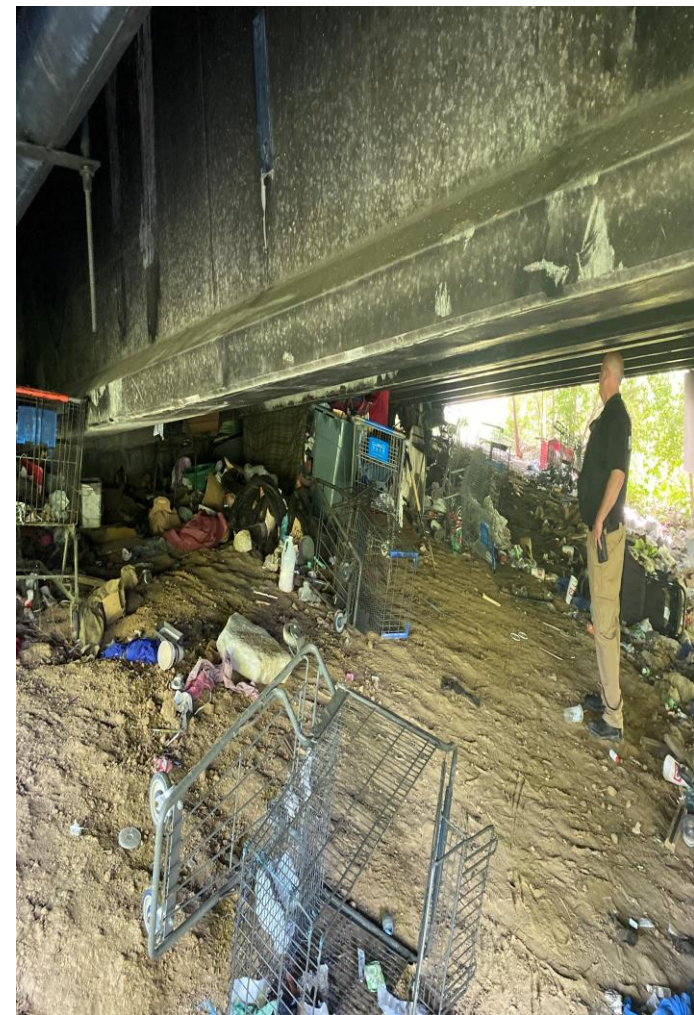
Background

- Police Department, Municipal Services & Parks/Recreation/Tourism coordinating weekly sweeps & cleanups
- This was a trial effort for a hybrid model, consisting of outreach/wrap-around services and enforcement



INDEPENDENCE
★ MISSOURI ★

A GREAT AMERICAN STORY



INDEPENDENCE
★ MISSOURI ★

A GREAT AMERICAN STORY



INDEPENDENCE
★ MISSOURI ★

A GREAT AMERICAN STORY

Impact on PD

- Takes manpower to conduct both outreach and enforcement
 - Currently, Community Services Unit is supplemented with School Resource Officers out for the summer.
 - When the SRO's return to school, our manpower will be significantly reduced.

Impact on Municipal Services

- July 2022 Coordinated Cleanup costs:
 - Labor - \$1,100
 - Equipment & Supplies - \$400
 - Dumpster fees (13 loads) - \$7,200
- Total cost per cleanup: \$8,700

Impact on Parks

- Cleanup costs in Parks (average, on-going costs):
 - Labor (8 employees) - \$18,775
 - Equipment & Supplies - \$8,640
 - Dumpster fees (1 ea.) - \$400Total avg. monthly cost: \$27,815
- July 2022 Coordinated Cleanup costs:
 - Labor (12 employees) - \$3,520
 - Equipment & Supplies - \$1,320
 - Dumpster fees (2 ea.) - \$800Total cost per cleanup: \$5,640

Cleanup Impact on Normal Department Duties

- Police Department: Currently, none. After the loss of the SRO's, any future efforts will impact normal operational functions.
- Municipal Services: Pothole repair window increases from 72 hours to 84 hours. 10% increase in time to respond to other Streets related issues
- Parks: In order to keep parks and right-of-way areas mowed and maintained, weekend work has been scheduled to off-set the loss of one weekday of work time

Policy Discussion?

- Two-Prong: Direction and Public Education/Expectations
 - City Staff is seeking Council direction on the future of these efforts.
 - This is needed as city services and operations are impacted by these efforts.
 - If direction is to continue efforts:
 - Public needs to understand there will be delays in services (mowing, street maintenance, etc.)



Questions?

★ A GREAT AMERICAN STORY ★