

IPL Capacity Update

Presented on August 8

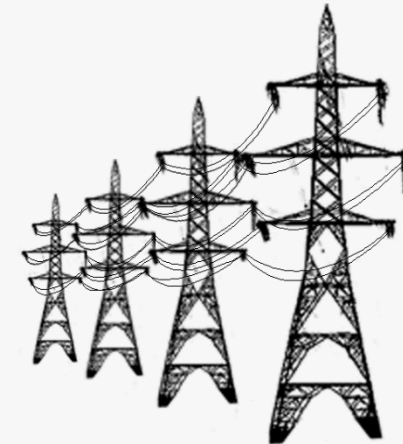
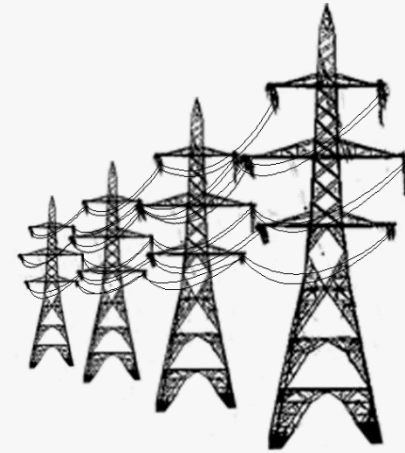
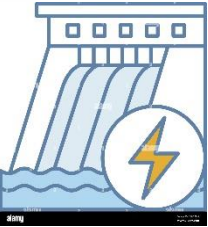
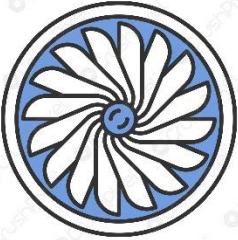
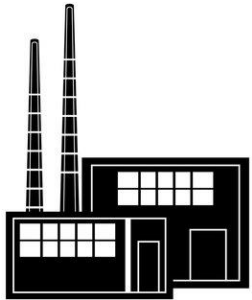
2022

SM

INDEPENDENCE

★ POWER & LIGHT ★

SPP Integrated Market



INDEPENDENCE

★ POWER & LIGHT ★

7/22/2022



SPP Integrated Market

- SPP provides ALL the energy for IPL
- Lowest average cost
- In return, IPL commits to supplying generation (capacity)
- Reserve obligation is 112% of annual peak load



Resource Adequacy

- SPP coordinates outages of generation and transmission assets to ensure adequate supplies are available to serve forecasted needs.
- Shortfalls have been experienced in extreme conditions.
- SPP in discussion to increase the Reserve Obligate from 112% to 115%
- SPP considering a penalty in capacity credit for underperforming assets.

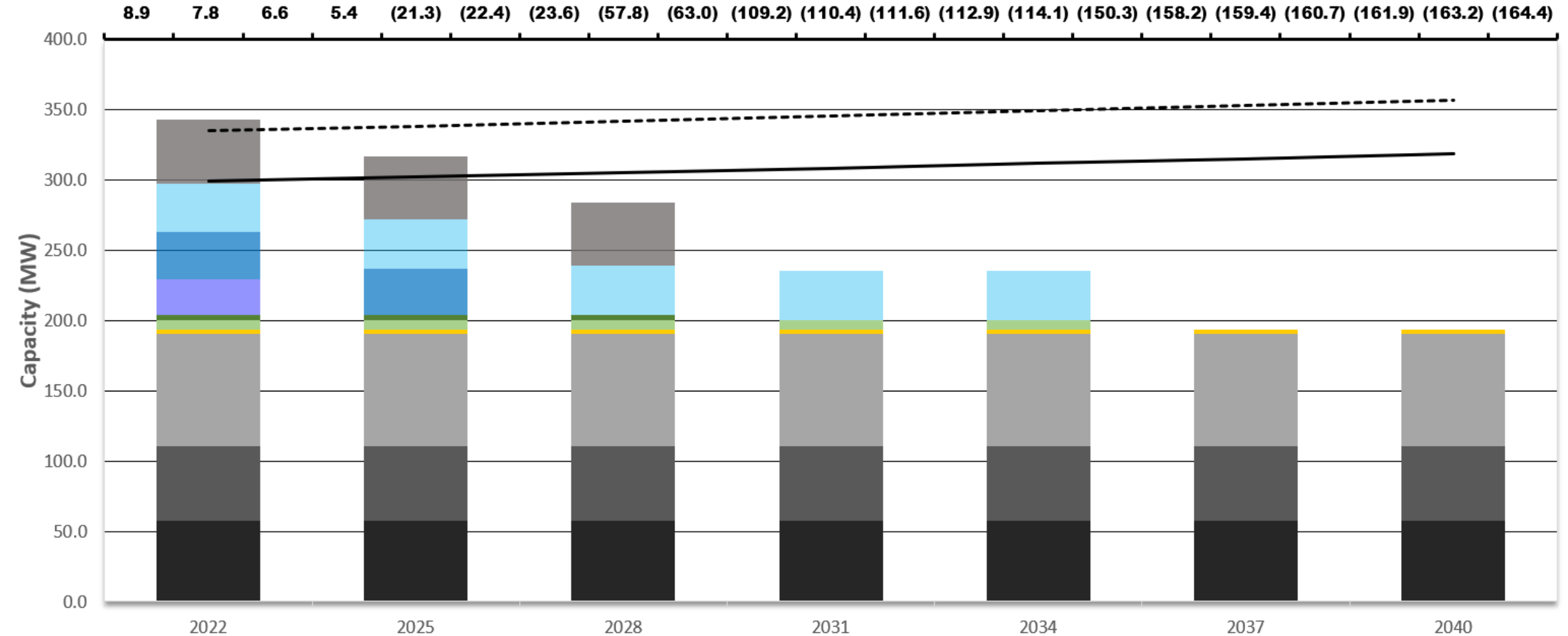
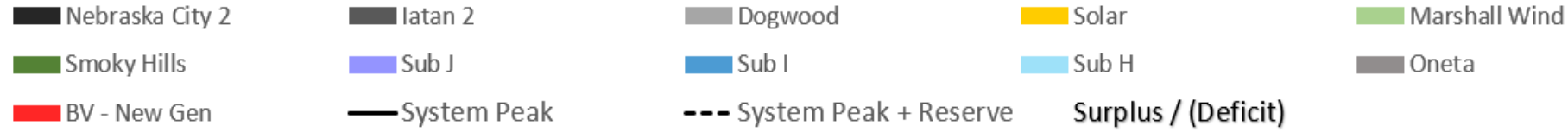


IPL Resource Portfolio (Accredited Capacity)

| | |
|-----------------------|--------------------------------------|
| • IPL CT's | 93.5 MW |
| • Dogwood | 80 MW |
| • Iatan II | 53 MW |
| • Nebraska City II | 57.6 MW |
| • Smoky Hills | 4 MW |
| • Marshall Wind | 6.7 MW |
| • Oneta (Capacity) | 45 MW |
| • <u>Solar Farms</u> | <u>(2.9 MW) (reduces IPL demand)</u> |
| • Total Capacity | 339.8 MW |
| • Capacity Obligation | 333.8 MW |



Balance of Load and Resources (MW)



Adding Additional Capacity

- Capacity only contracts – ONETA
- Power Purchase Agreements - adds capacity plus market opportunity for any energy generated
- Ownership/Partnerships – Dogwood Energy
- City owned generation

Questions ?



INDEPENDENCE
★ POWER & LIGHT ★