

LAGERS Projections

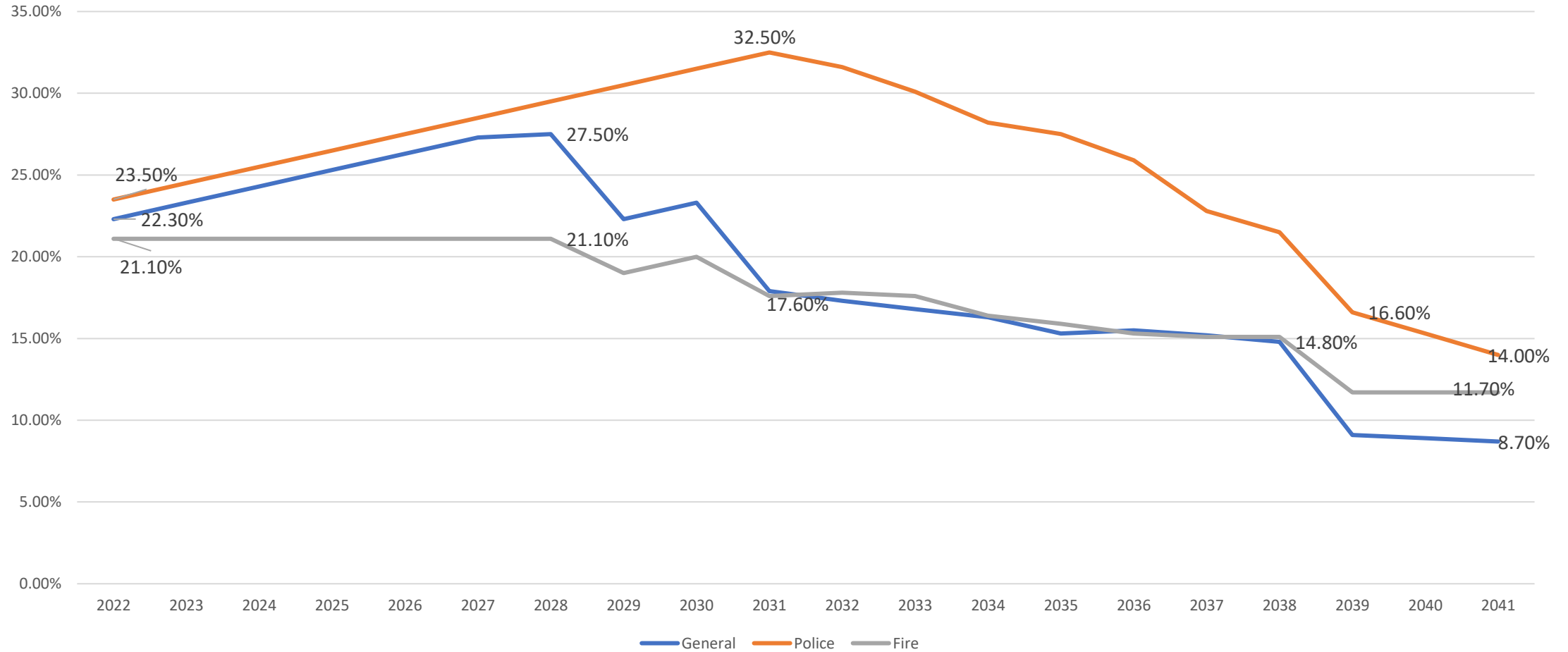


★ A GREAT AMERICAN STORY ★

Retirement Eligibility

		Retirement Eligibility (2 yrs.)		Retirement Eligibility (5 yrs)	
Group	Active Members	#	%	#	%
General	566	77	13.6%	140	24.7%
Police	186	18	9.7%	45	24.2%
Fire	162	22	13.6%	38	23.5%

Projected Contribution Rates (%)



Projected Contributions (\$)

