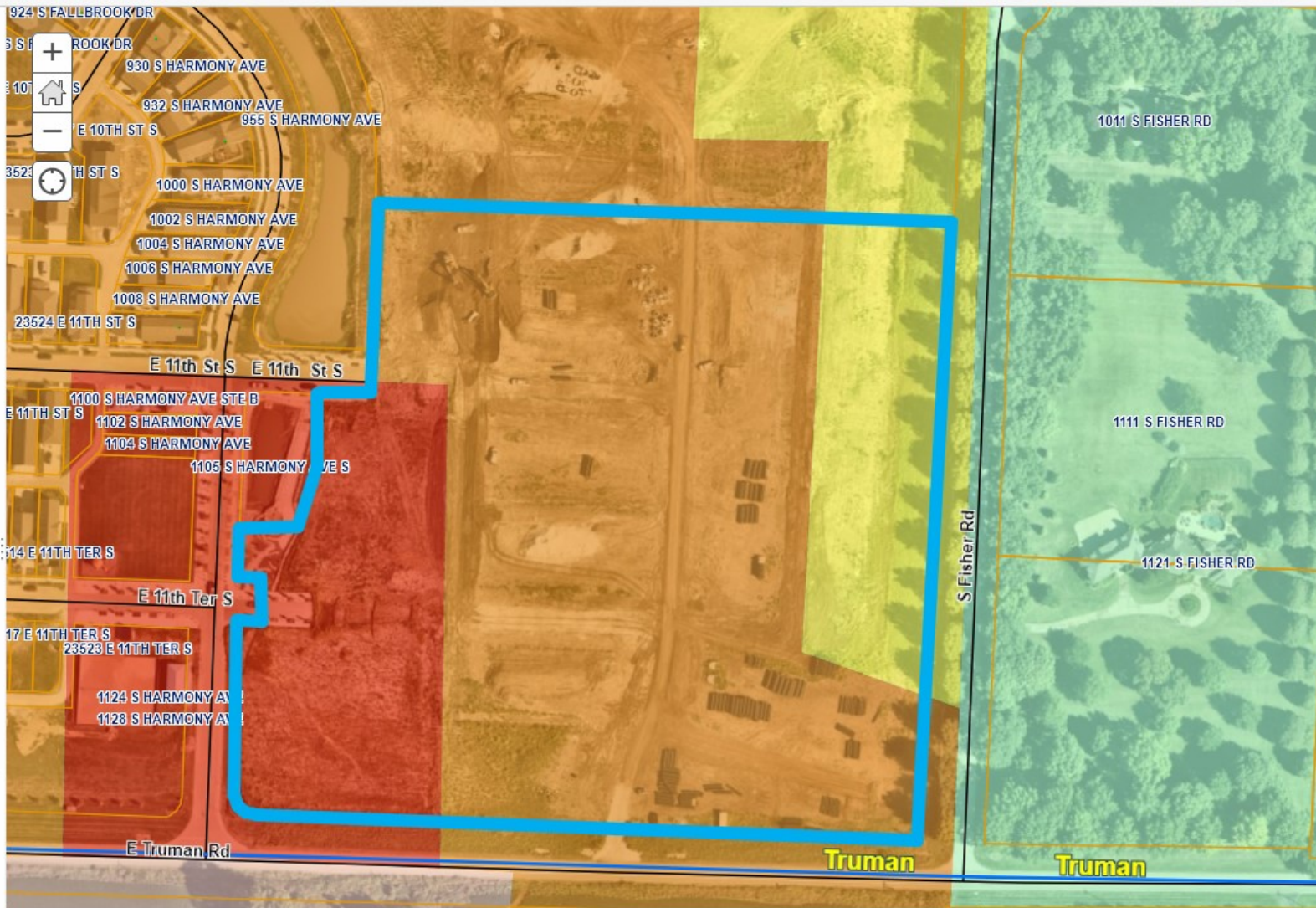


Legend  
Zoning

- ARTS
- Business Park
- Business Park/PUD
- Light Commercial
- Commercial
- Commercial/Historic Landmark
- Commercial/PUD
- Commercial/Special Character
- Warehousing
- Drumm Farm District
- Industrial
- Industrial/Jistoric Landmark
- Industrial Park
- Office
- Office/Planned Unit Development
- Single Family Residential Estate
- Two Family Residential
- Two Family Residential Historic Landmark
- Two Family Residential/PUD
- Moderate Density Residential/PUD
- Single Family Residential Large Lot
- Single Family Res Large Lot/PUD
- High Density Residential/PUD
- Single Family Residential Low Density



Zoning Map

Case # 22-320-02  
 Applicant: David Price  
 Address: NW Intersection of E. Truman Rd and S. Fisher Rd

