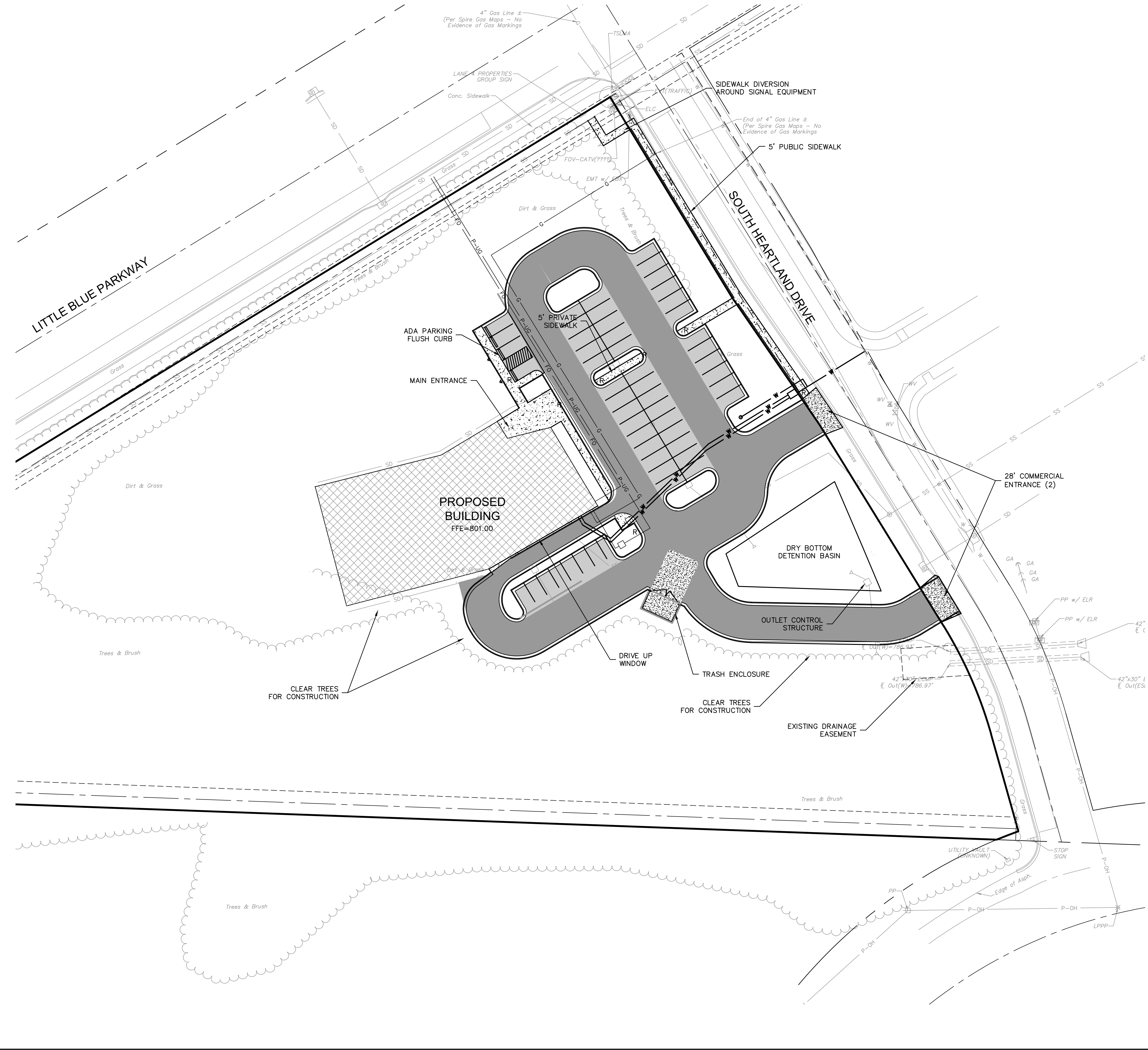


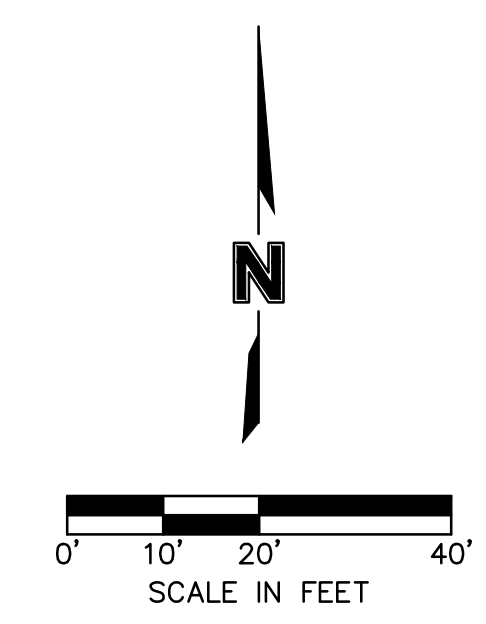
DWG: F:\2018\0001-0500\018-0330-B\40-Design\AutoCAD\Final Plans\Sheets\GNCV\WORK PACKAGE 13\CONSTRUCTION DOCUMENTS\C\_SIT01\_0180330.dwg USER: tparsons  
 DATE: Sep 15, 2022 2:31pm XREFS: C:\PBASE\_0180330 V\_XBOU\_80330-Little Blue Parkway C:\TBLK\_0180330



**LEGEND**

- PROPERTY LINE
- CONCRETE CURB & GUTTER TYPE "CG-1"
- CONCRETE CURB & GUTTER TYPE "CG-1 DRY"
- SAWCUT PAVEMENT FULL DEPTH
- COMMERCIAL ENTRANCE  
8" PCC CONCRETE PAVEMENT
- 6" PCC CONCRETE PAVEMENT
- CONCRETE SIDEWALK PAVEMENT
- HEAVY DUTY ASPHALT
- LIGHT DUTY ASPHALT
- PARKING STALLS
- PEDESTRIAN RAMP

SITE DATA TABLE	
EXISTING PROPOSED/ZONING	PUD
BUILDING AREA	12,500
OVERALL AREA	5.5 ACRES
DISTURBED AREA	2.2 ACRES
IMPERVIOUS AREA	
EXISTING	0 ACRES
PROPOSED	1.2 ACRES
PARKING SPACES	
REQUIRED (2.5 SP/M SF)	32
PROVIDED	50
ADA SPACES	
REQUIRED	1
PROVIDED	2



**SAPP DESIGN ARCHITECTS**  
 3750 S. Fremont Ave.  
 Springfield, MO 65804 417.877.9600

Sapp Design Associates Architects, P.C.  
 Missouri State Certificate of Authority #000607

**helix.**

1629 Walnut  
 Kansas City, MO 64108 816.300.0300

Helix Architecture + Design  
 Missouri State Certificate of Authority #000720

**SPECIAL NOTICES**  
 In the event the client consents to allow, authorize or approve of changes to any plans, specifications or other construction documents, and these changes are not approved in writing by the design professional, the client recognizes that such changes and the results thereof are not the responsibility of the design professional. Therefore, the client agrees to release the design professional from any liability arising from the construction, use or result of such changes. In addition, the client agrees to the fullest extent permitted by law, to indemnify and hold the design professional harmless from any damage, liability or cost (including reasonable attorney's fees and costs of defense) arising from such changes.  
 The personal seal of the registered Architect or Engineer shall be the legal equivalent of his signature wherever & whenever used, and the owner of the seal shall authorize this seal and the specification sections pertaining to this sheet. Responsibility shall be disclaimed for all other plans, specifications, estimates, reports or other documents or instruments relating to or intended to be used for any part or parts of the architectural project.

Mid-Continent Public Library  
 NEW LIBRARY BRANCH AT  
**EAST INDEPENDENCE**  
 Little Blue Parkway and S Heartland Dr  
 INDEPENDENCE, MO 64057  
 JACKSON COUNTY

PACKAGE  
**13**

Engineer of Record  
**NOT FOR CONSTRUCTION**

Terry M Parsons, Engineer MO PE-2018010505

**olsson**  
 7301 West 133rd Street, Suite 200  
 Overland Park, KS 66213  
 TEL 913.381.1170  
 FAX 913.381.1174  
 www.olsson.com

Olsson  
 Missouri State Certificate of Authority #001592

Revision No.	Description	Date

Project No.	Date	Drawn
B18-0330	07.29.2022	BRK

Drawing No.  
**C4.0**  
 DIMENSION PLAN

© Copyright 2019 - Sapp Design Associates, Architects, P.C.