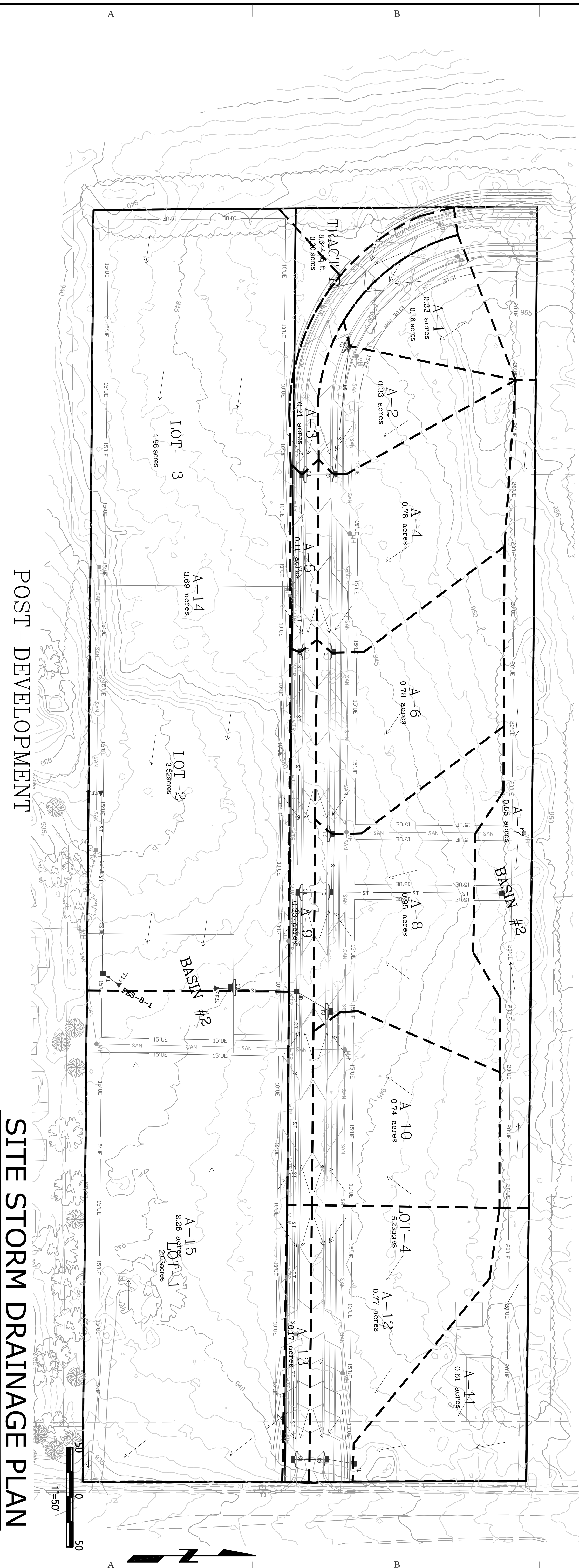


- DRAINAGE NOTE:**
1. WE HAVE PROPOSED 2 DETENTION BMP BASINS FOR THIS SITE
 2. DUE TO THE INCREASE IN IMPERVIOUS MATERIAL.
 3. WE HAVE ROUTED EXCESS RUNOFF FROM 2YR STORM EVENT FROM PREVIOUS SURFACES INTO ONE OF THE BASINS
 4. WE HAVE DESIGNED THE BASINS TO DETAIN THE STORM RUNOFF FROM THE SITE TO THE FOLLOWING PRE DEVELOPMENT RUNOFF
 5. WE HAVE 0.38 LAND TO THE NORTH THAT DRAINS ACROSS THIS SITE
 6. TOTAL SITE AREA = 13.08ac
 7. 2YR STORM EVENT PRE DEVELOPMENT RUNOFF = 6.25cfs
 8. 100YR STORM EVENT PRE DEVELOPMENT RUNOFF = 28.13cfs
 9. WE HAVE DESIGNED THE BASINS TO DETAIN THE STORM RUNOFF FROM THE SITE
 10. TOTAL RUNOFF FROM PRE DEVELOPMENT RUNOFF = 4.25cfs
 11. 2YR STORM EVENT POST DEVELOPMENT RUNOFF = 1.55cfs
 12. 100YR STORM EVENT POST DEVELOPMENT RUNOFF = 19.54cfs
 13. TOTAL SITE AREA = 13.08ac
 14. 2YR STORM EVENT MAX = 3.06cfs PER ACRE
 15. 100YR STORM EVENT MAX = 2.00cfs PER ACRE
 16. 2YR STORM EVENT MAX = 6.53cfs
 17. 100YR STORM EVENT MAX = 26.12cfs
 18. 100YR STORM EVENT MAX = 39.18cfs
 19. RUNOFF FROM THE SITE WILL BE LESS THAN THE PREDEVELOPMENT RUNOFF WITH PROPOSED DETENTION BASINS.
 20. ROUGH ESTIMATE OF PRE DEVELOPMENT RUNOFF = 4.25cfs
 21. 2YR STORM EVENT POST DEVELOPMENT RUNOFF = 1.55cfs
 22. 100YR STORM EVENT POST DEVELOPMENT RUNOFF = 19.54cfs



SUMMIT LIVING

INDEPENDENCE, JACKSON COUNTY, MISSOURI

Quist Engineering, Inc
 Civil Engineering for Residential & Commercial Site Development
 821 NE Columbus St.
 Lee's Summit, Missouri 64063
 Phone: (816) 550-5675
 email: rwaquist@quistengineering.com

COPYRIGHT © 2023
 1ST ISSUE
 9-18-23

REVISIONS

SHEET NO.

C400

JOB NO.
 E23-305